



#BeTheSHIFT



Back-to-school: Triggering a meaningful shift towards inclusive education



When?

Monday, 14/9, 9.15-12.15 am CEST



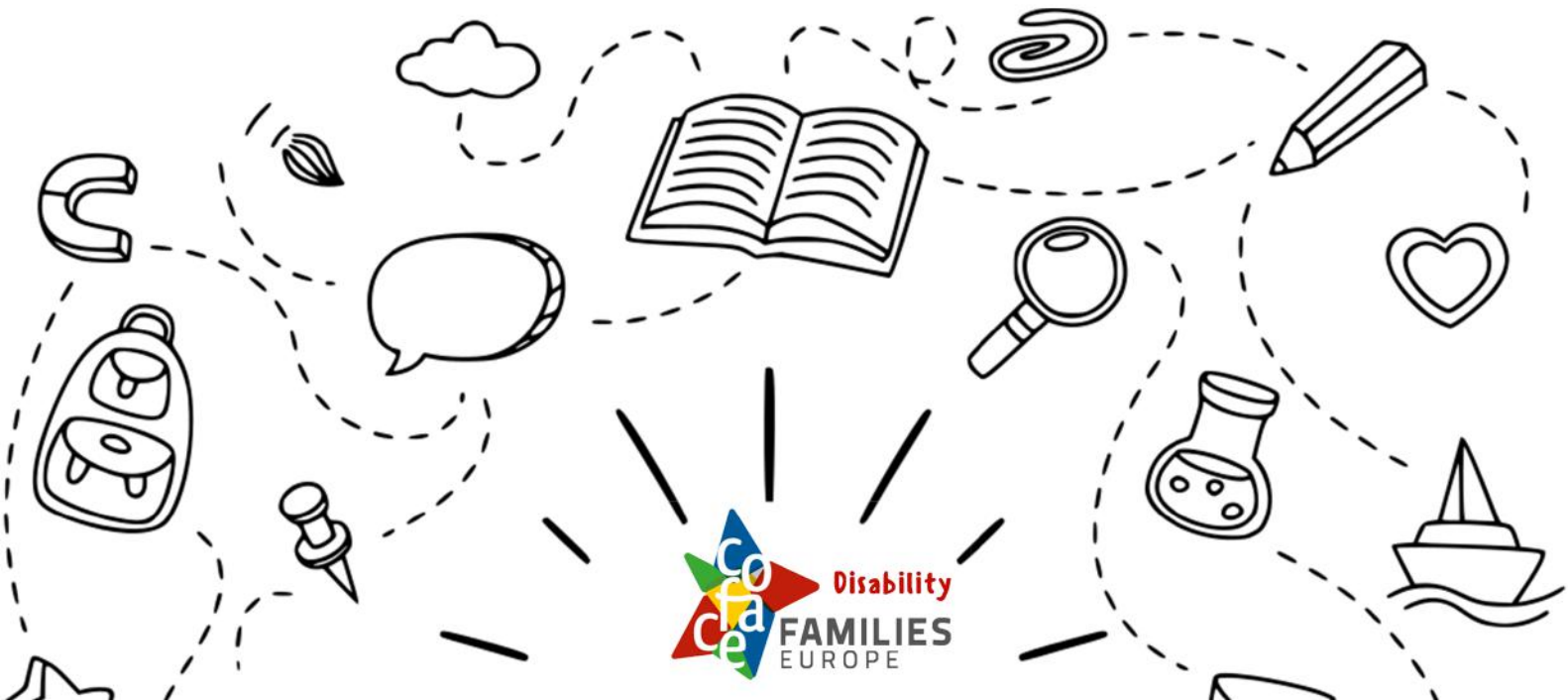
Where?

Online via Zoom



Register

coface-eu.org



BACKGROUND

Not all children will go back to school in September!

This webinar aims to raise awareness on the exclusion of children with disabilities from education and from mainstream education, structurally and in COVID-19 times. Using article 24 of the UN Convention on the Rights of Persons with Disabilities as a starting point, this webinar will feed into our #BeTheSHIFT campaign launched end 2019 to achieve meaningful inclusion for persons with disabilities and their families.

Article 24 – Education

1. States Parties recognize the right of persons with disabilities to education. With a view to realizing this right without discrimination and on the basis of equal opportunity, States Parties shall ensure an inclusive education system at all levels and lifelong learning directed to:
 - a. The full development of human potential and sense of dignity and self-worth, and the strengthening of respect for human rights, fundamental freedoms and human diversity;
 - b. The development by persons with disabilities of their personality, talents and creativity, as well as their mental and physical abilities, to their fullest potential;
 - c. Enabling persons with disabilities to participate effectively in a free society.
2. In realizing this right, States Parties shall ensure that:
 - a) Persons with disabilities are not excluded from the general education system on the basis of disability, and that children with disabilities are not excluded from free and compulsory primary education, or from secondary education, on the basis of disability;
 - b) Persons with disabilities can access an inclusive, quality and free primary education and secondary education on an equal basis with others in the communities in which they live;
 - c) Reasonable accommodation of the individual's requirements is provided;
 - d) Persons with disabilities receive the support required, within the general education system, to facilitate their effective education;
 - e) Effective individualized support measures are provided in environments that maximize academic and social development, consistent with the goal of full inclusion.
3. States Parties shall enable persons with disabilities to learn life and social development skills to facilitate their full and equal participation in education and as members of the community. To this end, States Parties shall take appropriate measures, including:
 - a) Facilitating the learning of Braille, alternative script, augmentative and alternative modes, means and formats of communication and orientation and mobility skills, and facilitating peer support and mentoring;
 - b) Facilitating the learning of sign language and the promotion of the linguistic identity of the deaf community;
 - c) Ensuring that the education of persons, and in particular children, who are blind, deaf or deafblind, is delivered in the most appropriate languages and modes and means of communication for the individual, and in environments which maximize academic and social development.
4. In order to help ensure the realization of this right, States Parties shall take appropriate measures to employ teachers, including teachers with disabilities, who are qualified in sign language and/or Braille, and to train professionals and staff who work at all levels of education. Such training shall incorporate disability awareness and the use of appropriate augmentative and alternative modes, means and formats of communication, educational techniques and materials to support persons with disabilities.
5. States Parties shall ensure that persons with disabilities are able to access general tertiary education, vocational training, adult education and lifelong learning without discrimination and on an equal basis with others. To this end, States Parties shall ensure that reasonable accommodation is provided to persons with disabilities.

Objectives of the webinar:

1. Collect and exchange information on this issue in a selection of European countries.
2. Present and discuss the COFACE Disability Platform key recommendations to ensure the right to education for all children through a shift towards inclusive education, as stated in article 24 of the UN Convention on the Rights of Persons with Disabilities.
3. Use the COFACE Families Europe S.H.I.F.T Guide proposals and approach as a compass for inclusion of persons with disabilities and their families in education and in society. The guide is available in the following languages: [EN](#), [FR](#), [PT](#), [ES](#), [IT](#)
4. Foster dialogue and mutual exchange between COFACE Disability members and other actors in society.
5. Acknowledge the perspective of and join forces with different stakeholders in society, including public authorities, civil society, mainstream education sector, staff and trade unions.

PROGRAMME
Monday 14th September 2020

9.15-9.30	Welcome and introduction
9.30-10.45	Session 1: Back-to-school for all? Realities in different countries with a focus on Belgium, France, Spain and Italy
	<ul style="list-style-type: none">- Hilde Timmermans, research department attaché, Gezinsbond, Belgium. <i>The role of parents, of the children involved and of classmates in the equal access to inclusive education for all special needs children</i>- Elodie Audonnet, Public relations Officer & Clara Alibert, Advocacy Officer of UNAPEI, France. <i>Back to school campaign, a citizen mobilisation on inclusive education</i>- Jose Luis Aedo, President, FIAPAS, Spain. <i>Inclusive environments to access education in equal conditions in the COVID-19 context and beyond</i> Q&A
10.45-12.00	Session 2: Triggering the S.H.I.F.T. Exchange between COFACE and key EU stakeholders
	Irene Bertana, Policy Officer, COFACE Families Europe. <i>COFACE Disability Platform S.H.I.F.T Guide and Key Recommendations on Inclusive Education</i> Reactions and discussion with: Kamil Goungor, Development Officer, European Network on Independent Living Rossella Benedetti, Chair of the Standing Committee for Equality, European Trade Union Committee for Education Mary Kyriazopoulou, Project Manager, European Agency for Special Needs and Inclusive Education Hans Martens, Head of Digital Citizenship, European Schoolnet Géraldine Libreau, Policy Officer, Early Childhood Education and Care, DG Education and Culture, European Commission - Q&A
12.00-12.15	Conclusions and next steps
	Chantal Bruno, APF France Handicap & Sylvie Hirtz, APEMH Co-chairs of the COFACE Disability Platform on the Rights of Persons with Disabilities and their Families
Practical information: -Working languages are English and French -Closed captions/subtitles will be available in English -The webinar is open to 100 participants and will be hosted on Zoom	

The campaign **#BeTheSHIFT** kicked off on the 28th November 2019 with the launch of the S.H.I.F.T. Guide. COFACE Families Europe started the campaign to raise awareness of the need to fully respect the rights of persons with disabilities and their families, and to inspire different actors in society on what can be done to foster their full inclusion.

