

Martino Serapioni

October 17, 2023

State of play on family policies in Europe: spotlight on 5 countries

THE CHALLENGE



COORDINATION AND COHERENCE



LACK OF INSTITUTIONALIZATION



FAMILY CHALLENGES CUT ACROSS
TRADITIONAL PUBLIC ADMINISTRATIONS



INTEGRATED FAMILY POLICIES: A POTENTIAL
SOLUTION

2023 EUROPEAN OBSERVATORY REPORT

1

COMPARATIVE ANALYSIS

2

CHALLENGES CAUSED BY SECTORAL FRAGMENTATION

3

MEASURES TO TACKLE FRAGMENTATION IN FIVE COUNTRIES

WHAT WE MEAN BY FAMILY POLICY INTEGRATION

A

COOPERATION BETWEEN THE VARIOUS SERVICES

B

FROM FRAGMENTATION TO INTEGRATION

C

ALIGNMENT BETWEEN JURISDICTIONS, BUILDING NETWORKS

D

CROSS SECTORAL RESPONSES

CROSS-SECTORAL CONTINUUM



FRAGMENTATION



COOPERATION



COLLABORATION



COORDINATION



INTEGRATION

3 KEY CROSS-CUTTING NEEDS OF FAMILIES WITH YOUNG CHILDREN



BALANCING CARE AND WORK AFTER
CHILDBIRTH



OVERCOMING SPLITS IN ECEC

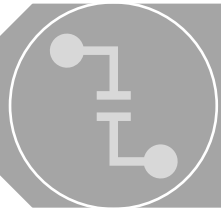


RECEIVE ADEQUATE SUPPORT,
ASSISTANCE AND INFORMATION DURING
THE PERINATAL PHASE

1. BALANCING CARE AND WORK AFTER CHILDBIRTH



FINANCIAL AND EMOTIONAL STRAIN



“CHILDCARE GAP”

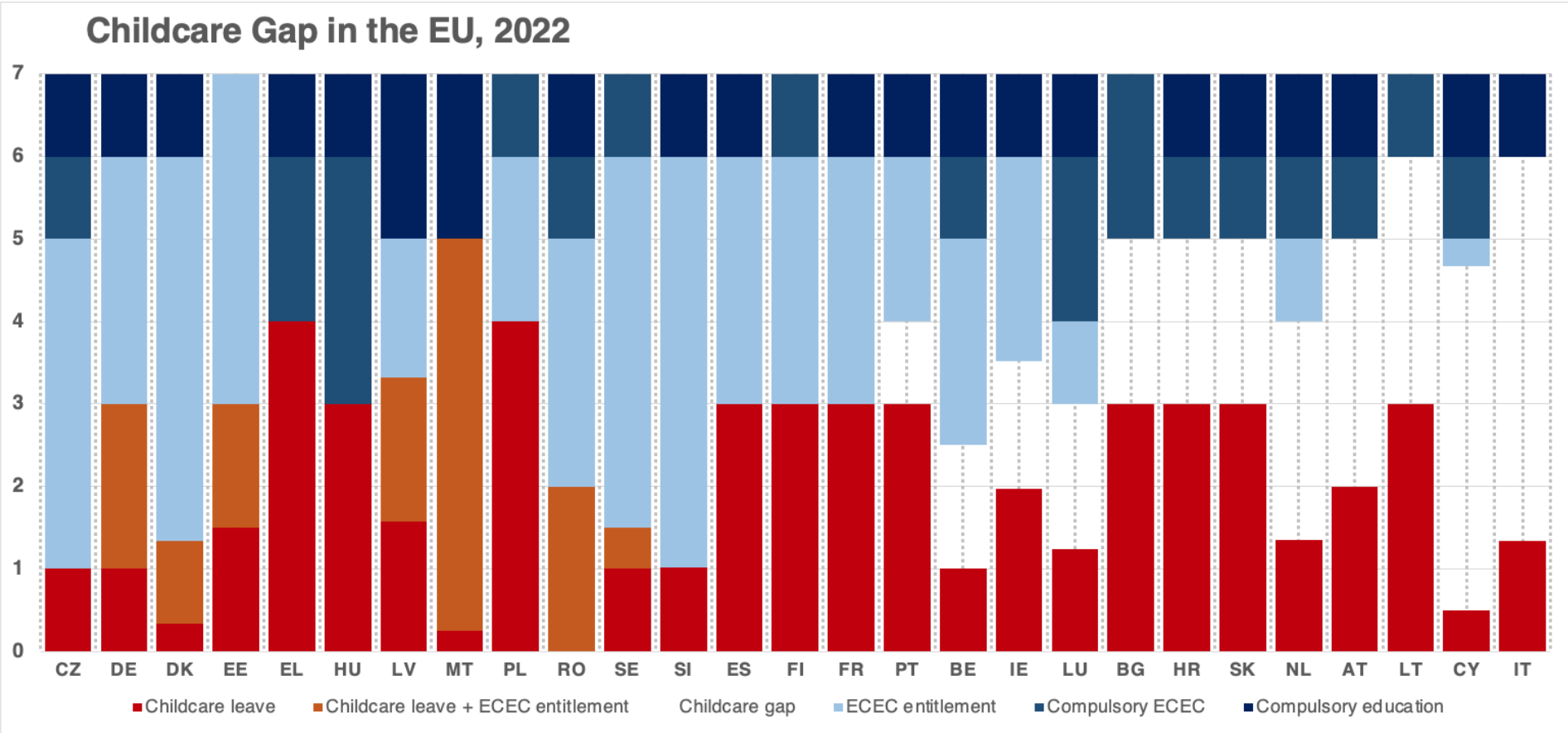


COORDINATION BETWEEN
EMPLOYMENT LEAVE AND ECEC



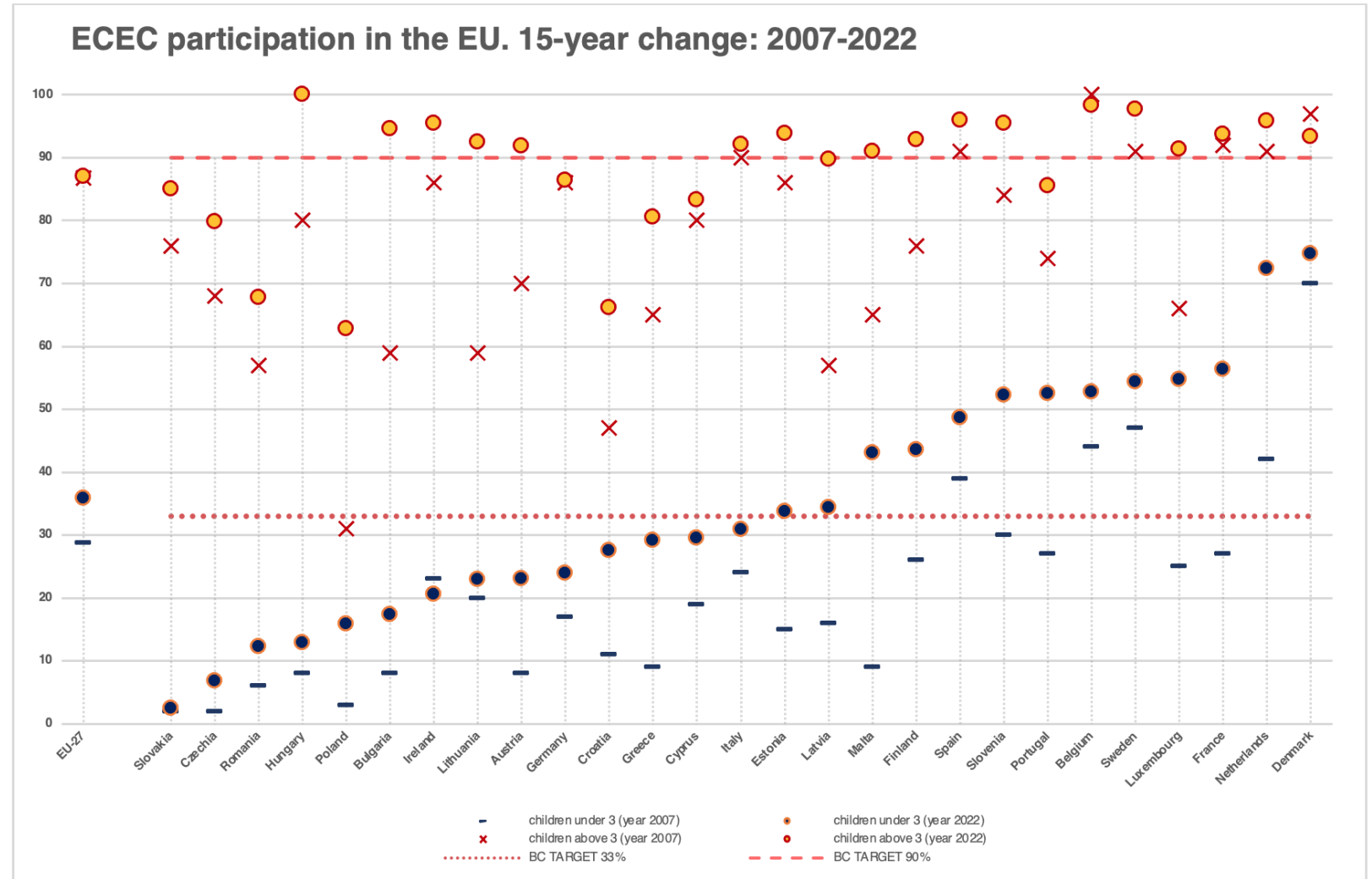
MULTIPLE GAPS

CHILDCARE GAP AND SUBSIDIZED CHILDCARE GAP



POLICIES

- WLB DIRECTIVE
- INCREASED LEAVE
- INCREASED FLEXIBILITY
- INCREASE IN ECEC PLACES



2. OVERCOMING SPLITS IN ECEC

The early years of a child's life are crucial for their development and future. Early childhood education plays a vital role in shaping positive educational trajectories and social relationships later in life

European children are most often exposed to two types of services: nurseries for 0-3 year olds and preschools for older kids before compulsory schooling. ECEC systems can be either separate for different ages or combined for all ages.

FIN + GER: INTEGRATED 0-6 CYCLE

ITA: RECENTLY INTRODUCED INTEGRATED CYCLE

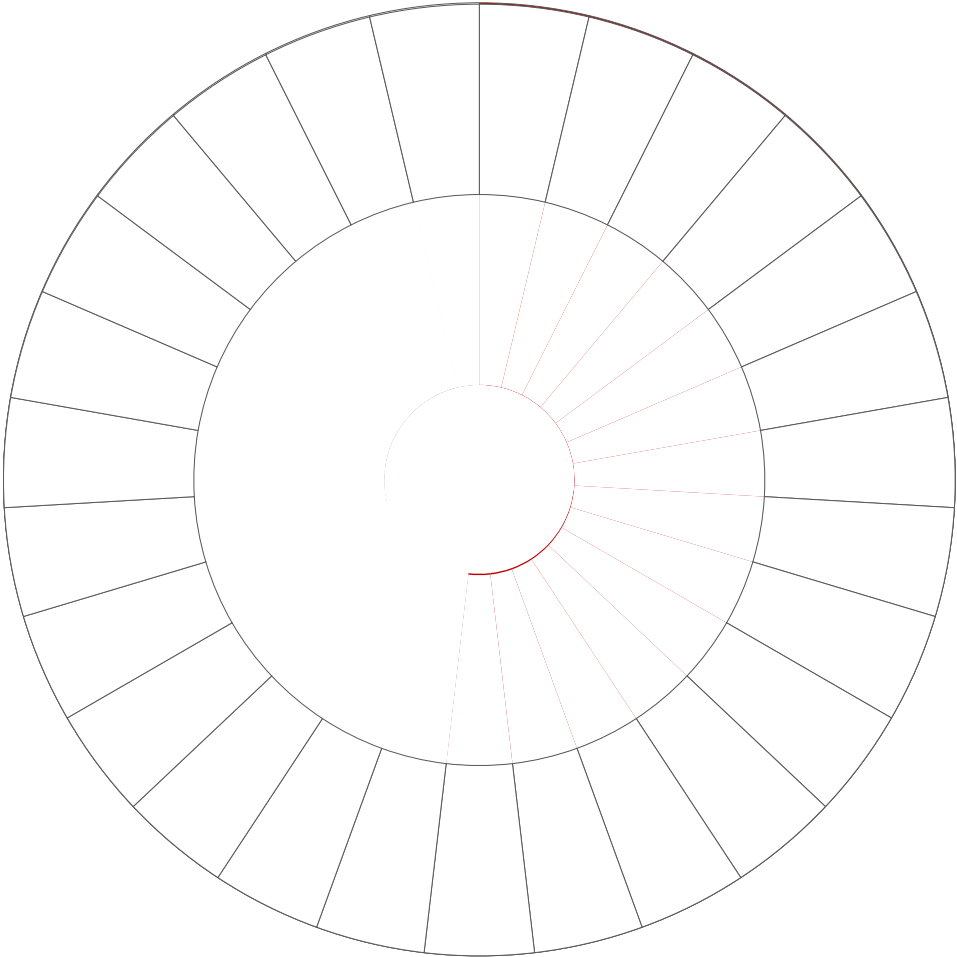
BEL FL.: SPLIT SYSTEM, WITH ATTEMPTS AT BUILDING CONTINUITY

POL: SPLIT SYSTEM

Integrated ECEC can help underserved families by improving transitions, educational consistency, and child and family experiences. Unitary methods can ease school introduction for language or less-formally-educated kids.

To improve the family experience, we need a unified approach throughout the ECEC cycle. Minimize fragmentation and improve continuity between childcare and preschool in governance, personnel, and education.

ORGANIZATIONAL SPLITS IN ECEC



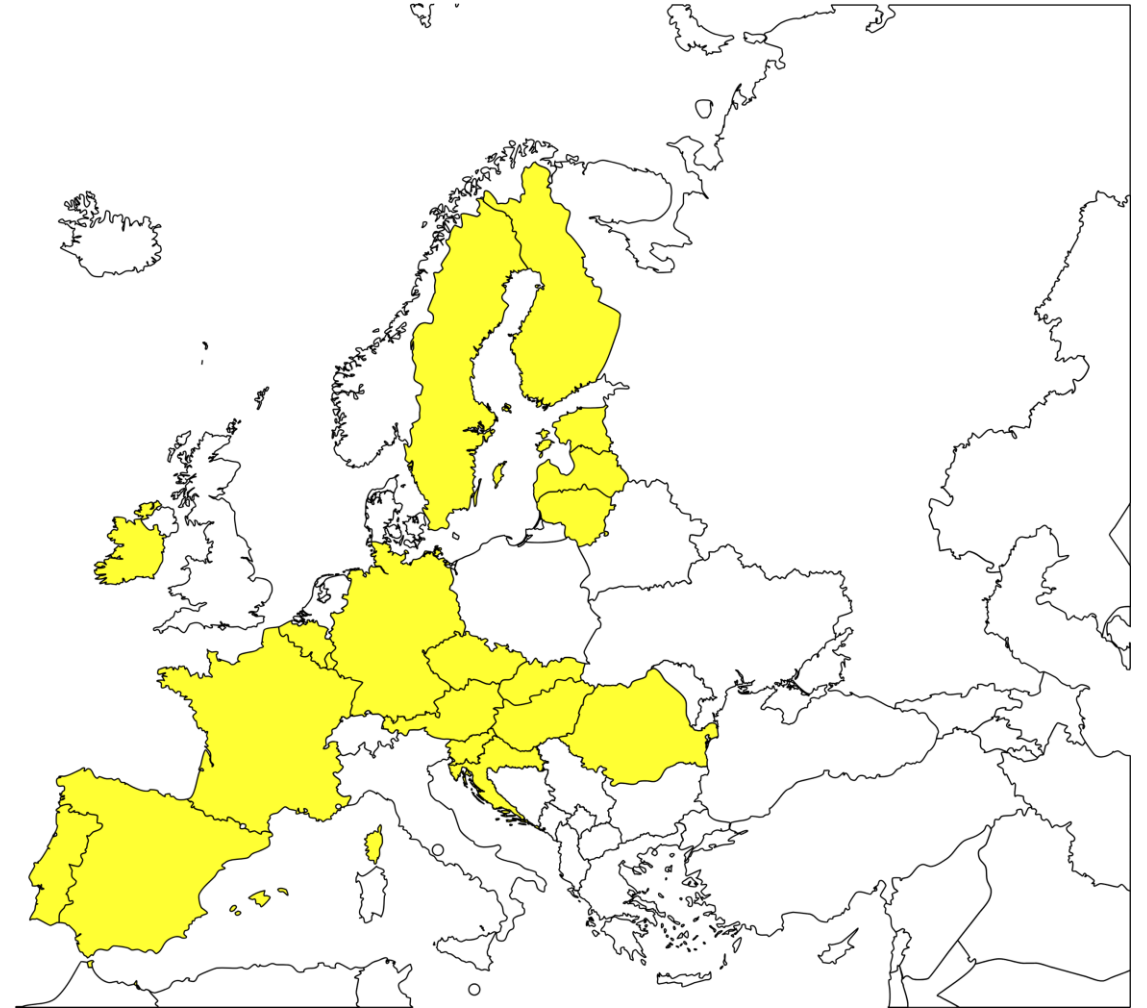
Created with mapchart.net



ORGANIZATIONAL SPLITS IN ECEC

**- GUIDELINES COVERING
THE ENTIRE 0-6 ECEC
CYCLE**

**- BACHELOR DEGREE
REQUIRED FROM THE
ENTIRE ECEC STAFF**



Created with mapchart.net

3. RECEIVE ADEQUATE SUPPORT, ASSISTANCE AND INFORMATION DURING THE PERINATAL PHASE

The perinatal phase is a critical time for families, and a well-rounded approach to health and social care is gaining recognition as essential for their well-being.

Accessing perinatal services can be challenging due to a fragmented system, especially for isolated or foreign families, leading to delays, poor communication, and additional costs.

GER: FRUEHE HILFEN NETWERKEN,
PRAEVENTIONSKETTEN,
FAMILIENZENTREN

BEL-FL: HUIS VAN HET KIND

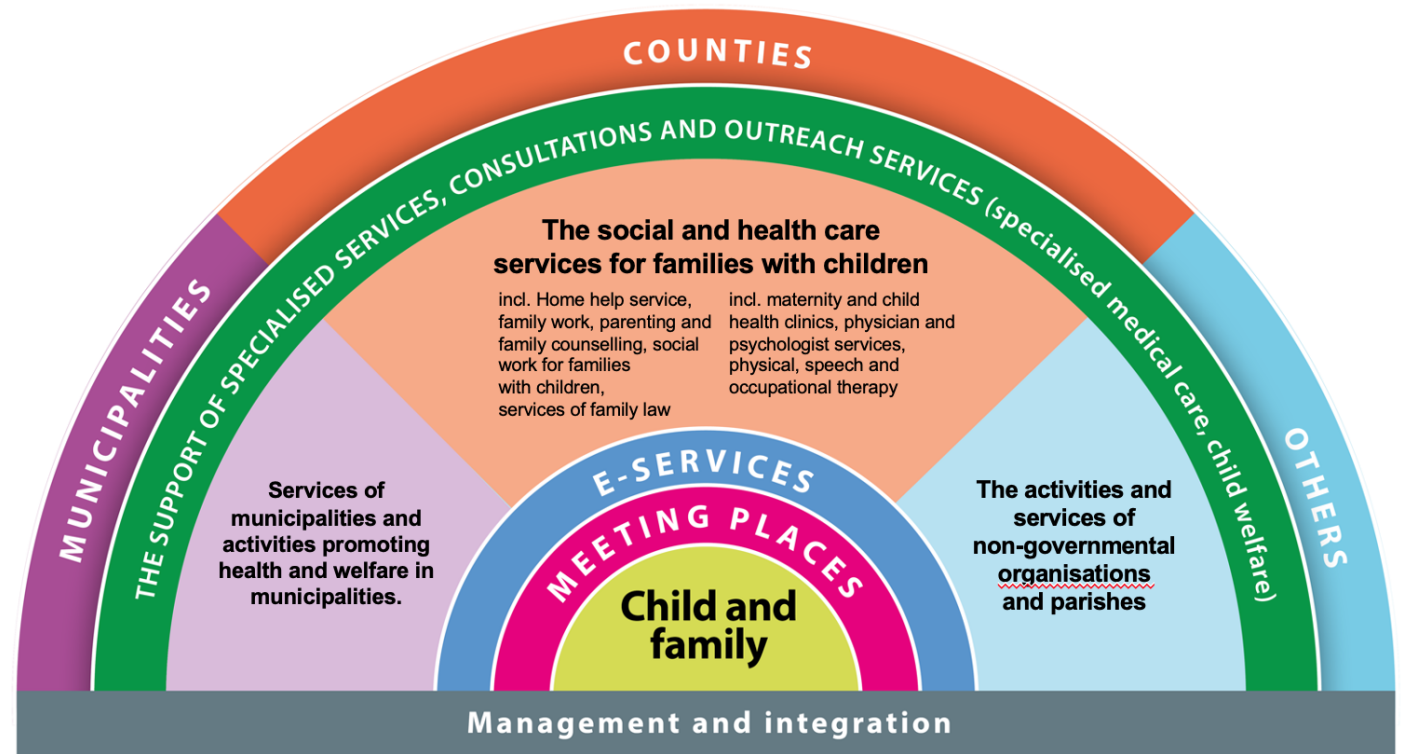
FIN: PERHEKESKUS (FAMILY CENTER)

ITA: CONSULTORI FAMILIARI (POINTS
OF ADVICE) + CENTRI POLIFUNZIONALI

To support families during the perinatal phase, a variety of health, social, and educational services are needed, including prenatal care, preventive health care, mental health support, parenting assistance, and leisure activities.

Incorporating services into a unified formula of parental support is complex, with obstacles including professional and organizational fragmentation and the need to create an interconnected network between agencies.

INTEGRATED FAMILY CENTERS



CONCLUSIONS

- FAMILY POLICY INTEGRATION HAPPENING NOW
- DIFFERENT PATHS TO INTEGRATION
- BARRIERS STILL EXIST
- COORDINATION BEGETS COORDINATION
- EQUITABLE FAMILY POLICY SPACE

LUNCH BREAK





Many thanks for the attention.

mserapioni@coface-eu.org