

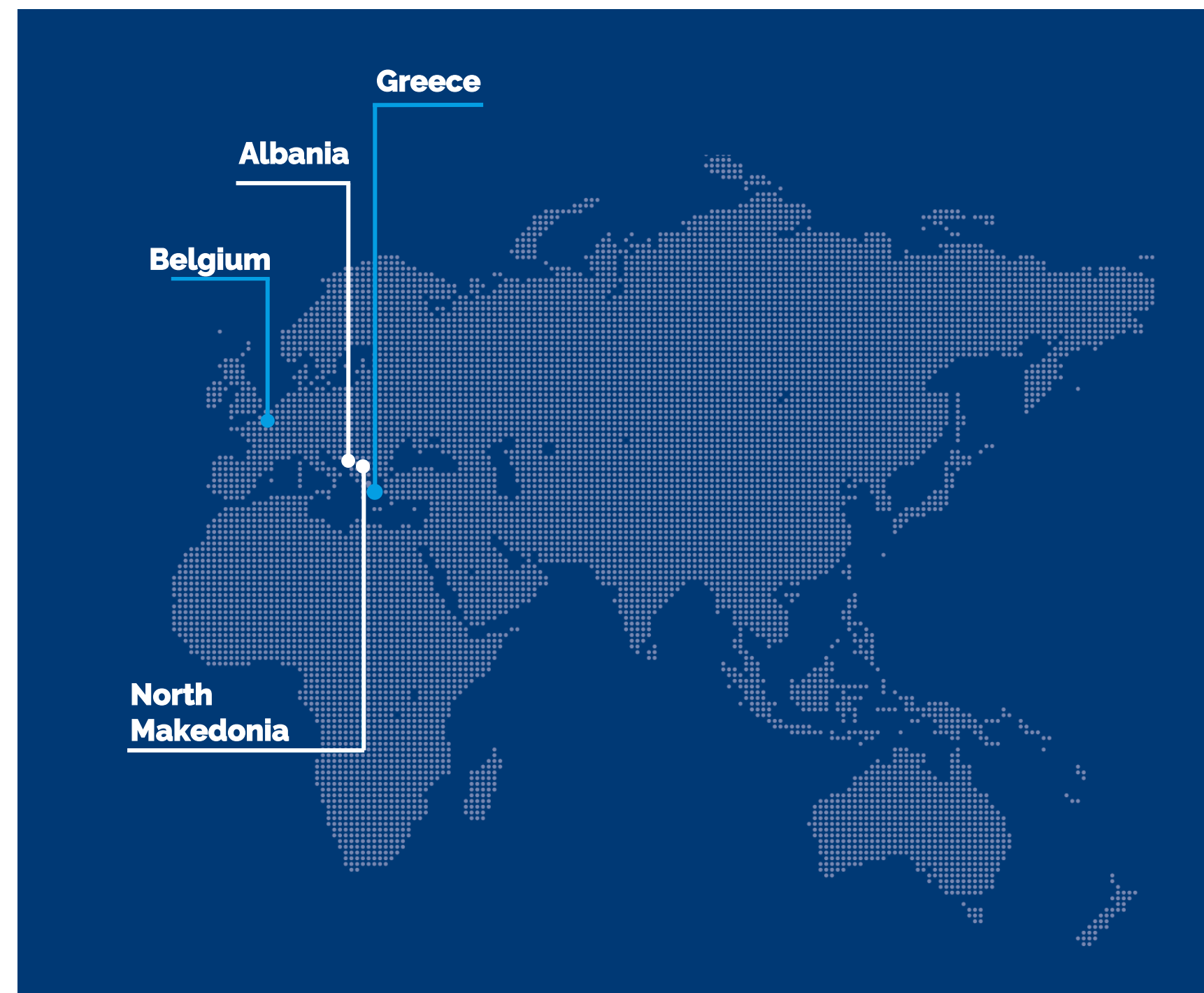
Kmop

Est. 1977

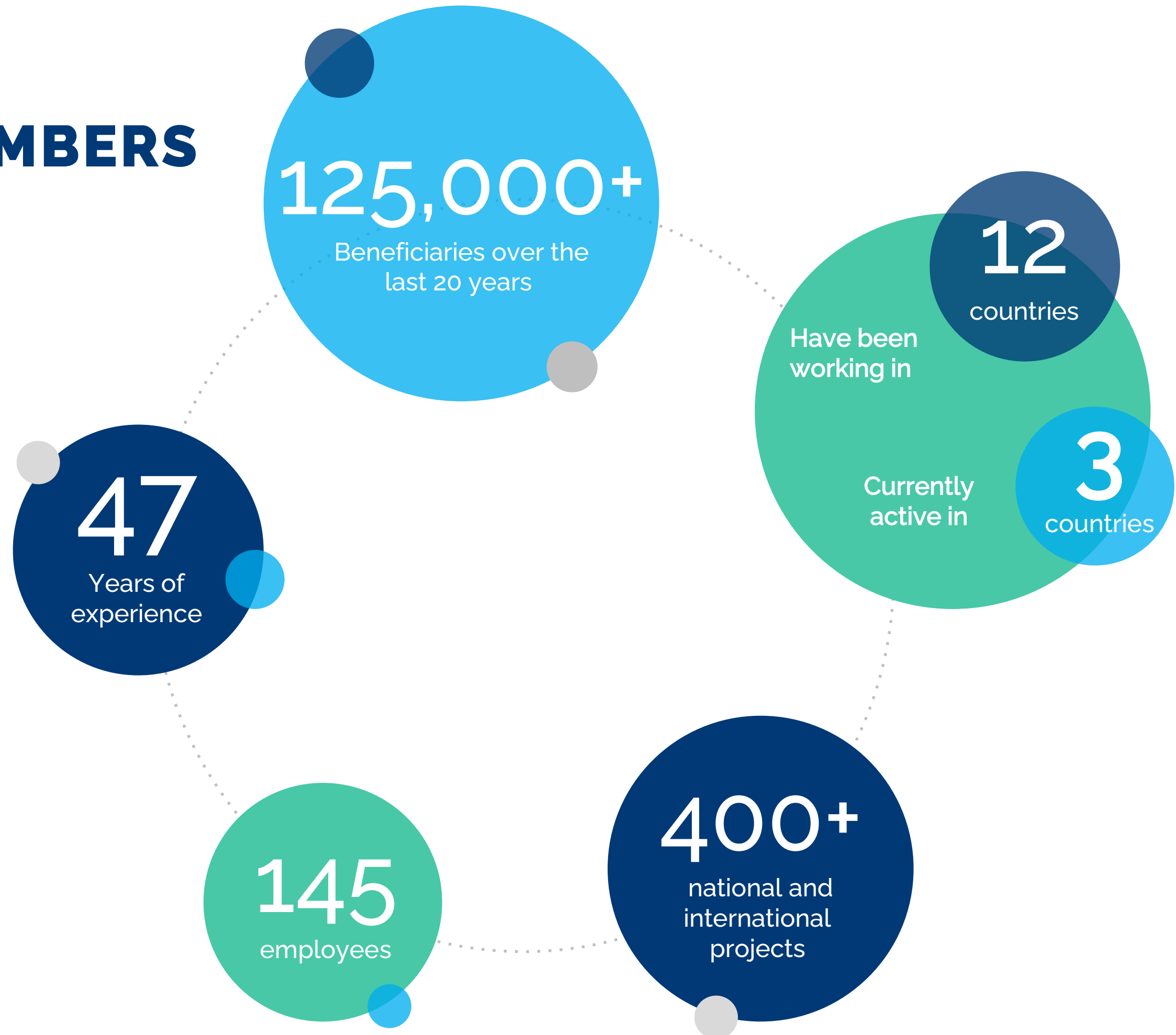


WHO WE ARE

- Established **in 1977**, KMOP is one of the oldest civil society organisations in Greece.
- It offers **social support services** and implements **various programs** aiming at the empowerment and wellbeing of individuals and communities.
- Currently present in **3 countries**, with permanent offices in Athens, Piraeus, Kifisia, Thessaloniki, Brussels, Skopje and Tirana.



KMOP IN NUMBERS



SERVICES



Education is key in building resilient societies. In KMOP, we have developed the online platform KMOP Education Hub, providing free, online, educational courses.



We conduct in depth research in a wide set of social sciences disciplines, in order to produce **impactful policies** & advocate on social issues.



We provide **tailor-made services** to promote mental health, foster employability, fight poverty & combat all forms of bullying.

AREAS OF WORK

- 
Health Promotion & Wellbeing: mental health & psychosocial support, elderly, disabilities, ASD, health promotion & wellbeing, sports
- 
Education: school education, ECEC, early school leaving, digital education for schools, digital learning in Higher Education
- 
Human & Fundamental Rights: migration, sex gender sexuality, SGBV, trafficking, discrimination, protection of the child
- 
Civil Society & Democracy: civic participation, preventing violence, extremism & radicalisation, quality of democracy
- 
Social Inclusion & Employment: employment, employability, entrepreneurship, social inclusion



LIVE WITHOUT BULLYING



livewithoutbullying.com/

Live Without Bullying is an initiative of KMOP.

It is based on an **online counselling platform**, where children, parents & teachers can directly chat with trained and experienced psychologists, so as to be assisted in dealing with school and cyber bullying.

ANONYMOUS | ONLINE | FREE OF CHARGE

Since 2015, the LWB platform has supported **more than 30,000 students** in Greece.

The programme is supported by the Greek Ministry of Education & has been evaluated by COFACE Families Europe as a Good Practice to confronting bullying.



EDUCATION HUB

KMOP EDUCATION HUB

KMOP Education Hub offers: 

- ✓ **Digital learning platform**, accessible to all
- ✓ **Upskilling** opportunities to support social inclusion and eliminate vulnerabilities
- ✓ **Reskilling** opportunities to help people stay competitive in the labour market
- ✓ A focus on **social skills** to help people interact constructively with each other



A photograph of three people (two women and one man) sitting around a table, looking at a laptop. The man is wearing glasses and a grey polo shirt, and is smiling. The woman next to him has long blonde hair and is also smiling. The woman on the left has curly dark hair and is looking at the laptop. The background is a bright, modern office space with a white wall and a blue pendant light.

OUR MISSION AND VISION

VISION

To create a more inclusive and sustainable society by equipping individuals with the skills and knowledge to navigate their social Ecosystem effectively.

MISSION

To empower individuals and organizations to tackle societal challenges through innovative vocational training and lifelong learning.

OPEN EDUCATIONAL RESOURCES



FREE & ACCESSIBLE

- All EORs are available for free to ensure accessibility for all users.
- No barriers to entry, allowing individuals from diverse backgrounds to engage in learning.



CATEGORIZED KNOWLEDGE LIBRARY

- EORs are organized into categorized topics, creating a well-structured knowledge library.
- Users can easily find resources relevant to their interests and learning needs.



EASY TO USE

- The user-friendly interface makes it simple to navigate and explore the EORs.
- Intuitive design ensures a seamless and enjoyable learning experience.



HIGH QUALITY

- Curated in collaboration with experts, providing reliable and valuable educational content.

EUROPEAN FAMILY LAB – L.I.N.K. EDUCATION PROGRAMME



L.I.N.K. (Learning and Innovating through New Knowledge)

- Focuses on key social challenges of our times.
- Its educational tools and courses are
 - **based** on values of human rights, non-discrimination, gender equality, social inclusion, diversity, empowerment, and intergenerational solidarity, and
 - **designed** for contributing to addressing important challenges that modern societies face.

EUROPEAN FAMILY LAB – L.I.N.K. EDUCATION PROGRAMME



L.I.N.K reflects the joint goal of COFACE and KMOP to create an **education & life long training programme** for **upskilling professionals** working with families, or addressed directly to families and carers, students of psychology, education, social sciences as well as any professional working with children in learning environments on a daily basis. The thematic units of LINK are chosen according the real needs 2 challenges that European families face, nowadays, addressing the needs of every age group.

online course

School Bullying Management - Effective Skills for Educators

Register for free at

education-hub.kmop.org



Since 2023

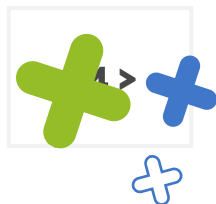


803

Educators and other professionals working with children have completed the Link training course.

1.949

Trainings are still in progress.



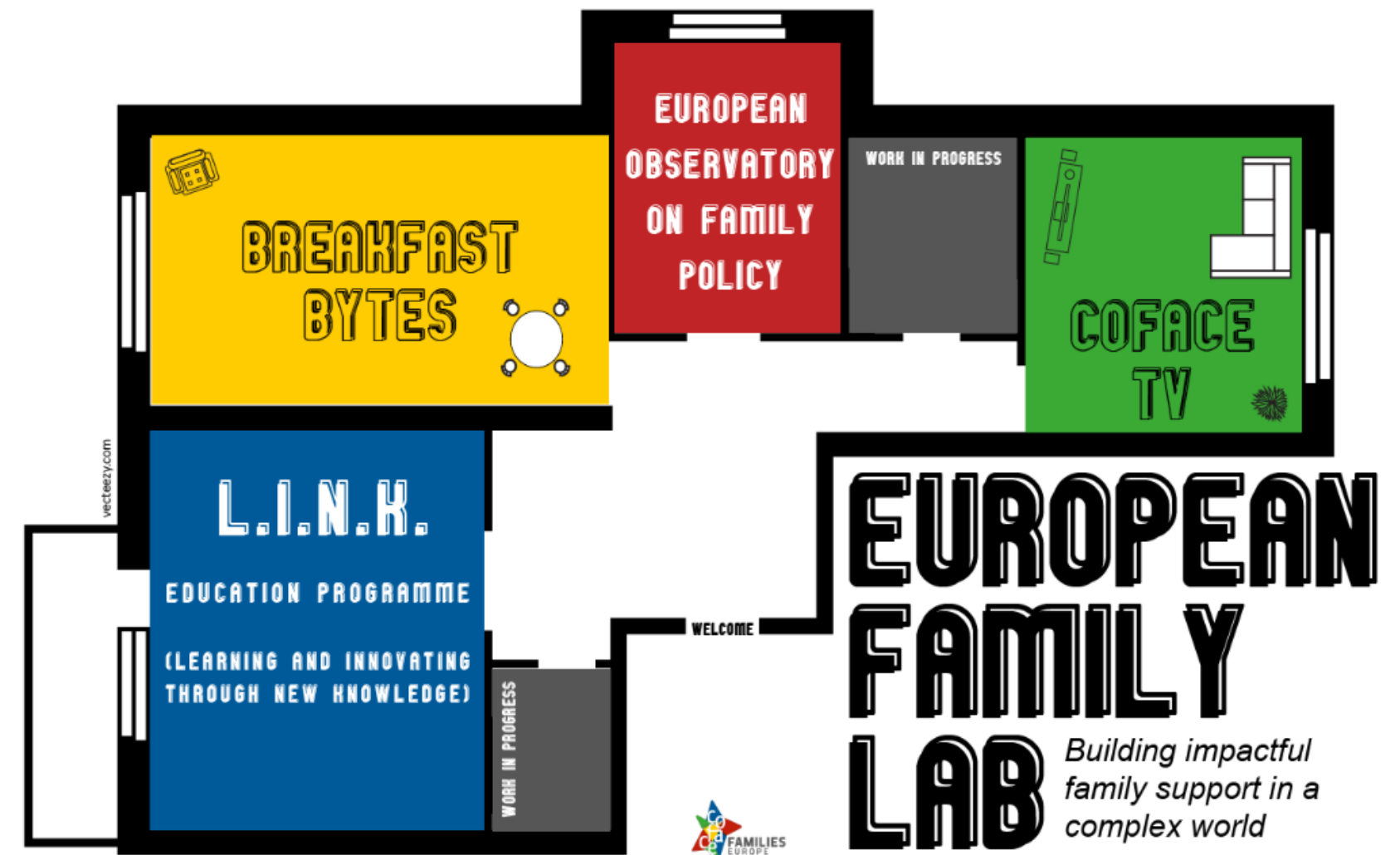
EUROPEAN FAMILY LAB



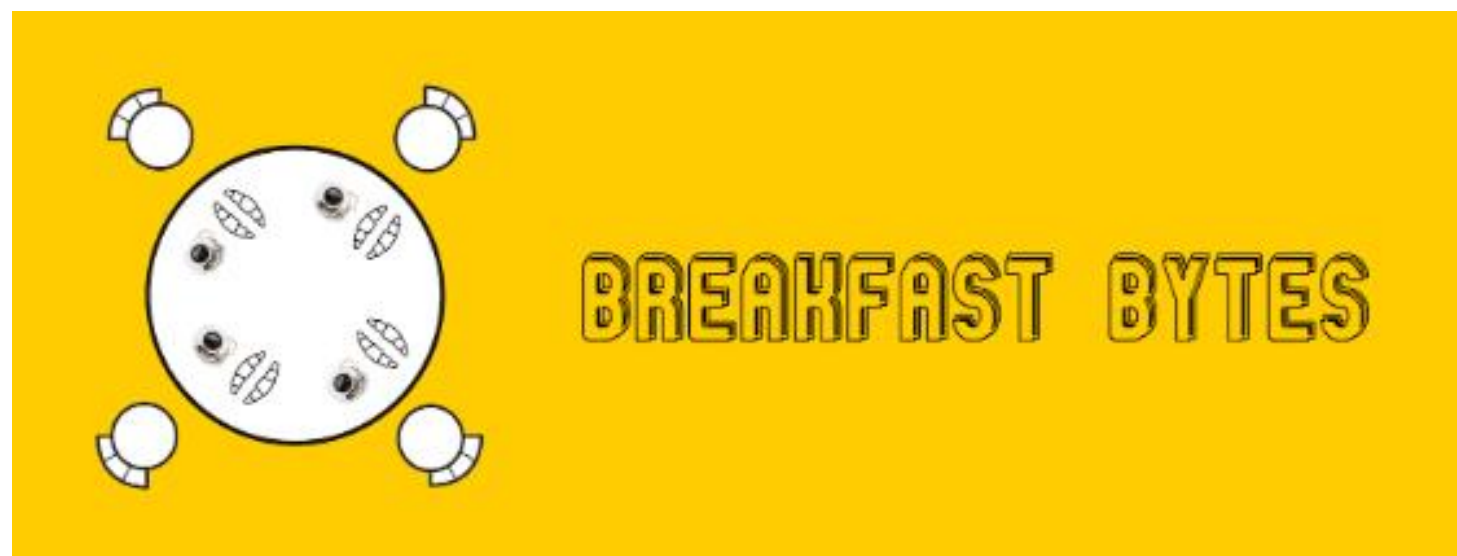
EUROPEAN FAMILY LAB

What is the Lab?

Now, more than ever, it is important to connect professionals in real time through transnational exchanges in order to tackle the social impacts of COVID-19 on families and children. Certainly, **we believe the European Family Lab is the place to connect them.** This can serve as an innovation incubator for ideas and cross-country knowledge transfer to help family professionals deliver the best possible supports for families and children. We are building the Lab virtual room by virtual room:



EUROPEAN FAMILY LAB – BREAKFAST BYTES WEBINAR SERIES



We refer to 90-minutes online webinars on a variety of topics concerning challenges that families of today face. The target group of the webinars is especially professionals working with families & children but they are open to all (researchers, policy makers, teachers, health workers, families & more).

EUROPEAN FAMILY LAB – COFACE TV



It is our YouTube channel collecting videos on policy and practice to support families & children who need information advice and practical tools so as to be helped in a number of ways to face their everyday challenges.

BY EUROPEAN FAMILY LAB – EUROPEAN OBSERVATORY ON FAMILY POLICIES

EUROPEAN
OBSERVATORY
ON FAMILY
POLICY

The observatory is implemented as a partnership between COFACE Families Europe & Odisee's Center for Family Studies launched in 2012. It aims to serve as **a platform for the observation,** analysis and dissemination of evidence on family policy and other social concerns directly relevant to family well being across the European Union.

Thank you

