

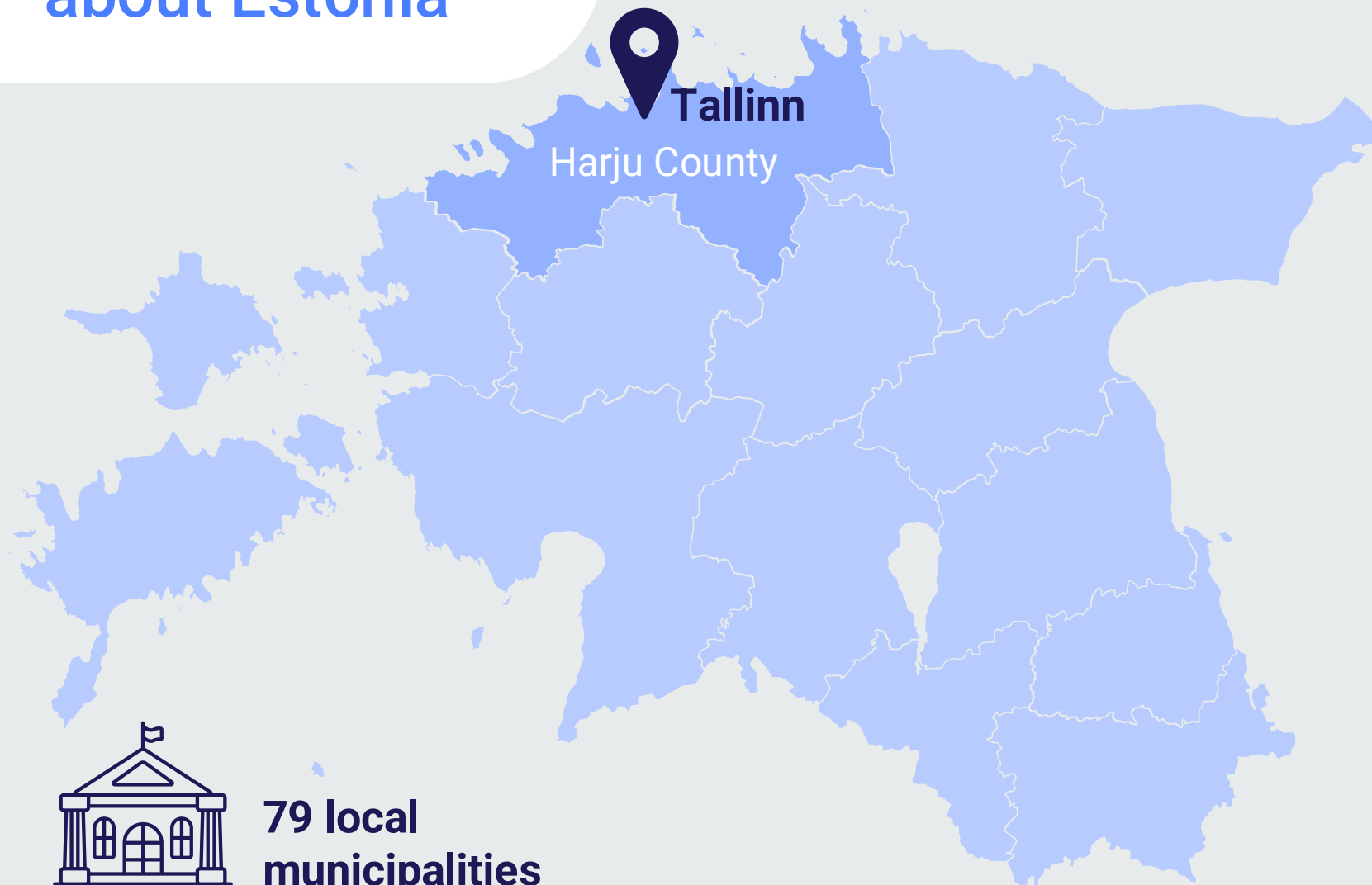
The Real Meaning of Integrated Support – ECG progress

Hanna Vsevirov
Vice Chancellor
Ministry of Social Affairs, Estonia



REPUBLIC OF ESTONIA
MINISTRY OF SOCIAL AFFAIRS

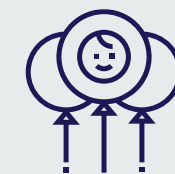
General data about Estonia



79 local municipalities



Population 1.37 million



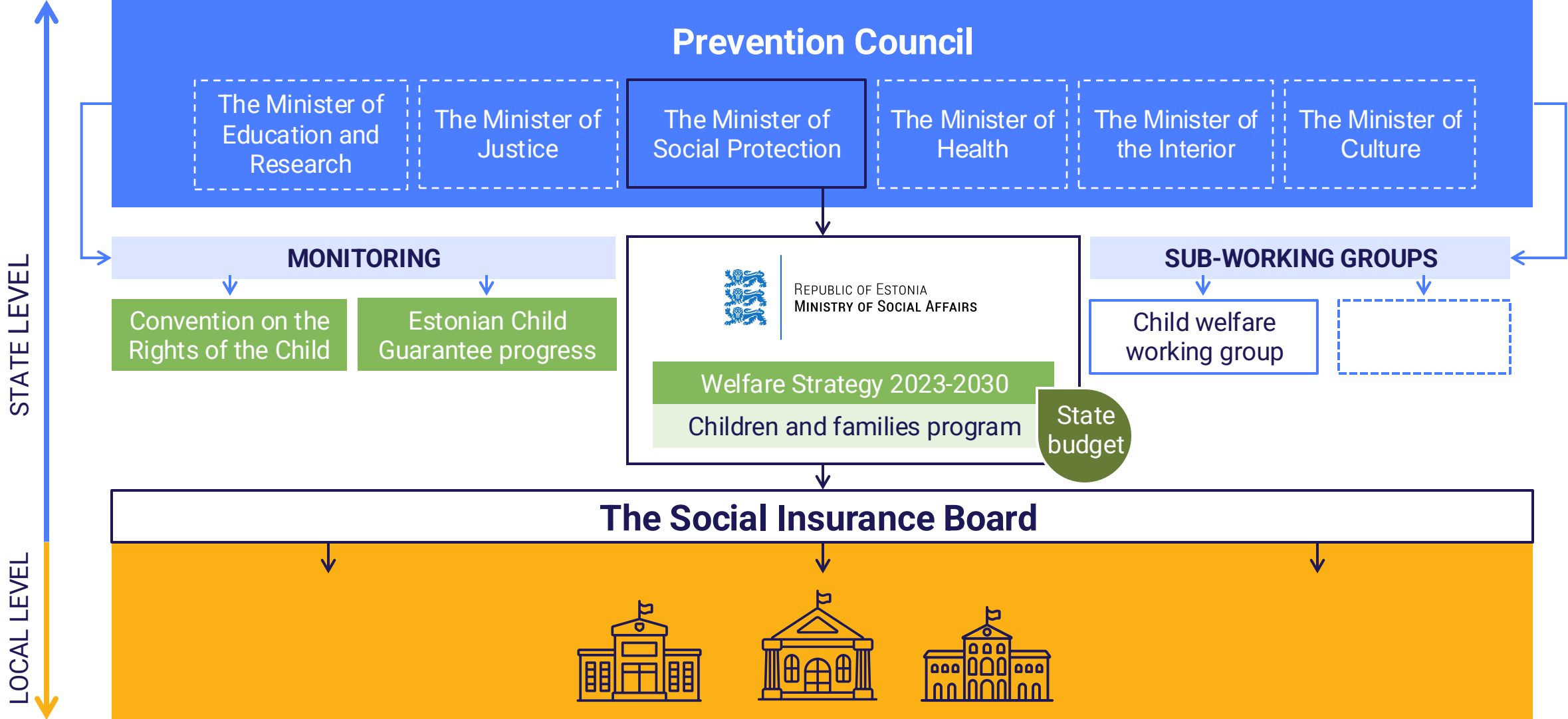
**Number of children
267 879**

**32% children living in Tallinn
49% in Harju County**



Total fertility rate 1.31

A comprehensive system for ensuring the child well-being



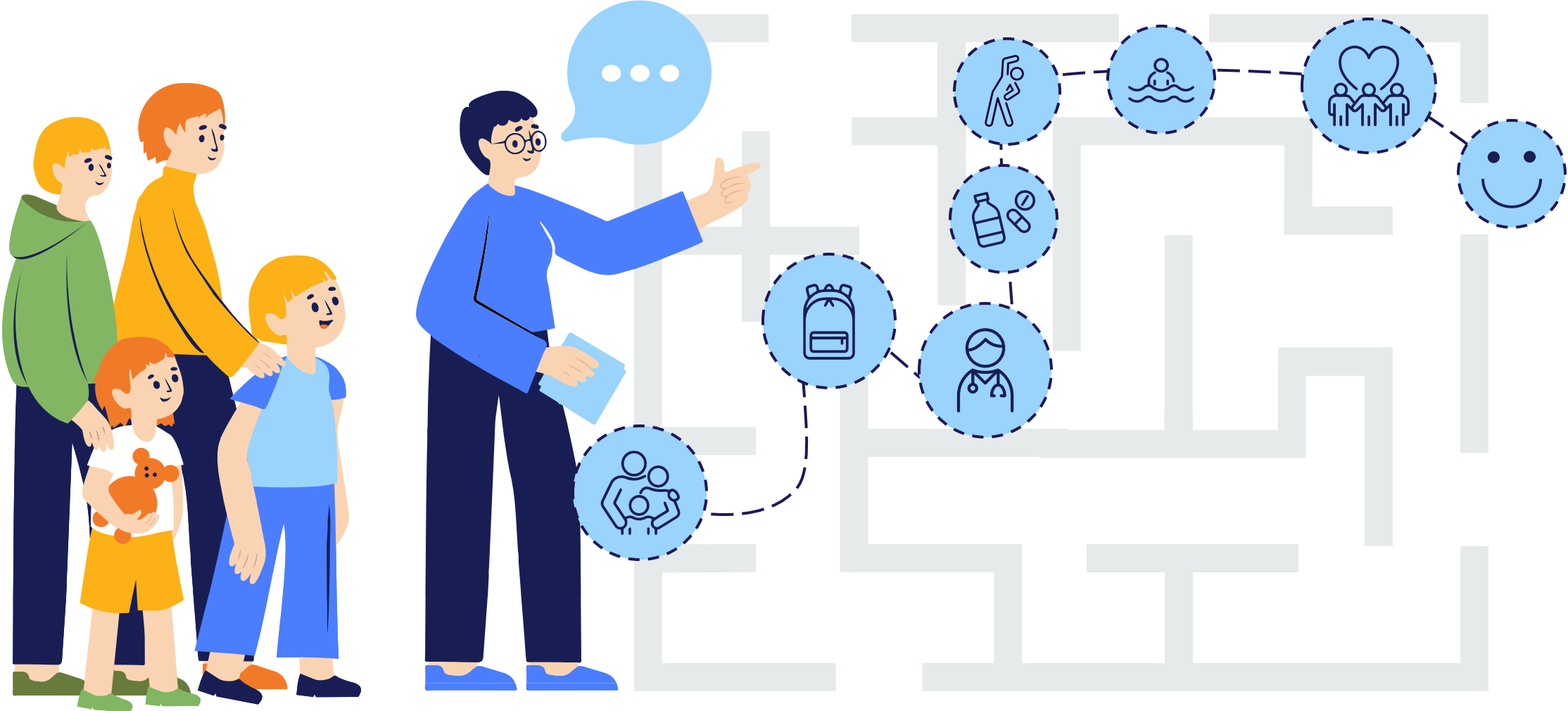
**Automatic sharing of
information and data of children
who are in potential need for
support**



Today → difficult process for the whole family



The Goal → supported and pro-active process from the very beginning



Crucial pieces of the support system



Integrated support system



Child's health and wellbeing



The quality of life of the child and his/her family



Child's education



Child's sense of safety and social situation in the society



Automatic sharing of data of a child in need

2023: Local municipalities automatically receive data on children for whom the assessment of the severity of disability has been requested or determined.

2025: Information service on the state portal – an overview of the most important for parents, which can be encountered when taking care of a child with special needs and health condition.

2026: Automatic data exchange in the case when the child has an irreversible health condition.

- ✓ A specific diagnosis activates automatic data exchange (health information system → social services information system)
- ✓ Local municipality has to assess the needs of the child and family
- ✓ If needed, the functioning of child for determination of a disability is also conducted.

Thank you!



Anastasia Shuraeva



REPUBLIC OF ESTONIA
MINISTRY OF SOCIAL AFFAIRS