

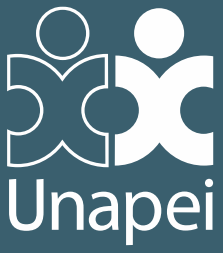
# Unapei



---

[plaidoyer@unapei.org](mailto:plaidoyer@unapei.org)

---



# Unapei. Who we are.

Photo à ajouter (je regarde pour le droit à l'image)

**Historic parental-led organization**

**Defending Rights of People with  
Intellectual Disabilities,  
Multiple Disabilities &  
Persons with Neurodevelopmental Disorders**

**Leading Disability Network in France**

**Highlighting the Challenges  
Faced by the Families**

## Our ambition: Committed to living in community

### For whom ?



**200 000**

Children and adults

with :

- Neurodevelopmental Disorders
- Multiple Disabilities
- Mental Disorders

and **their families**

### By whom ?



**330**

Parents' associations in France and overseas territories



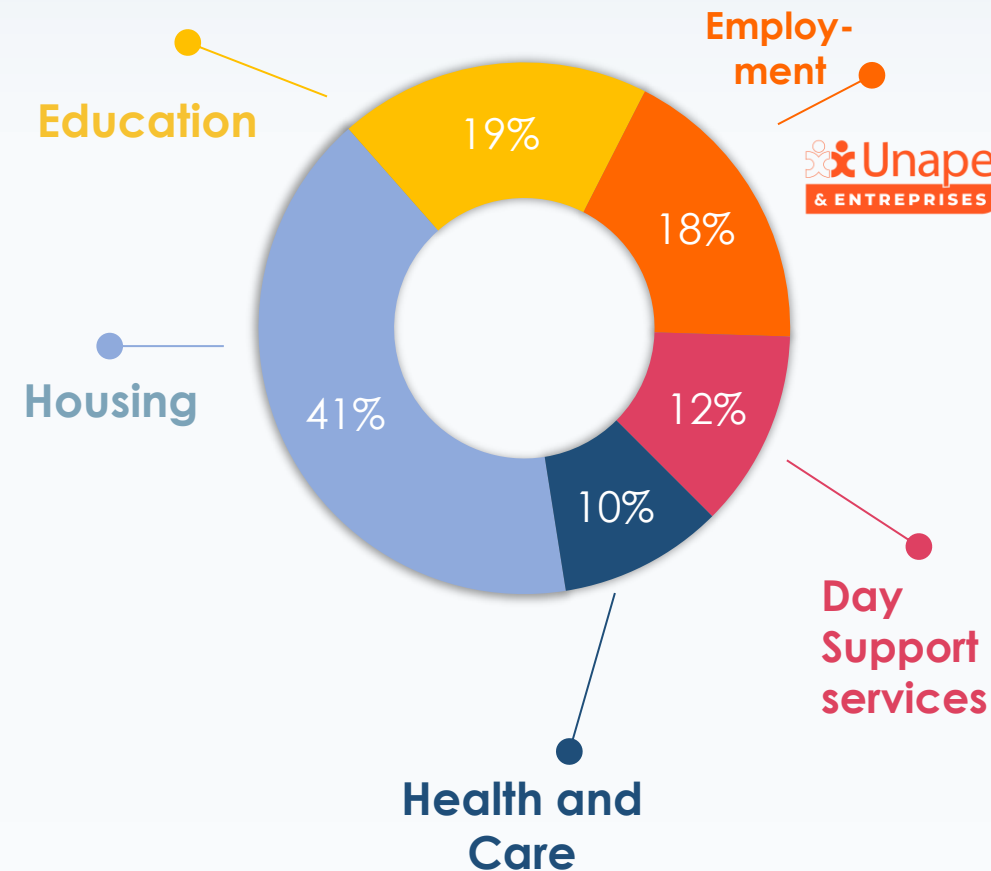
**+ 78 800**  
professionals



**+ 45 000**  
members

### How ?

**3 300** Community based services





# Our objectives: Strategic Guidelines 2030

## 1) Improving the quality of everyday life for everyone

We want to enhance the daily quality of life for individuals through diverse, continuous support, innovation, and collaboration, with a focus on high-need care, knowledge advancement, and responsible employment practices.

## 2) Working as network to strengthen our impact

We want to strengthen our impact through network collaboration, enhanced coordination, and strategic partnerships, while promoting engagement and striving for excellence.

## 3) Helping society to achieve an inclusive transition

We want to support society in achieving an inclusive transition by defending human rights, promoting universal accessibility, empowering self-advocacy and collaborating with socio-political actors.

# Early Childhood Intervention

**Empowering Families: best Practices from France**





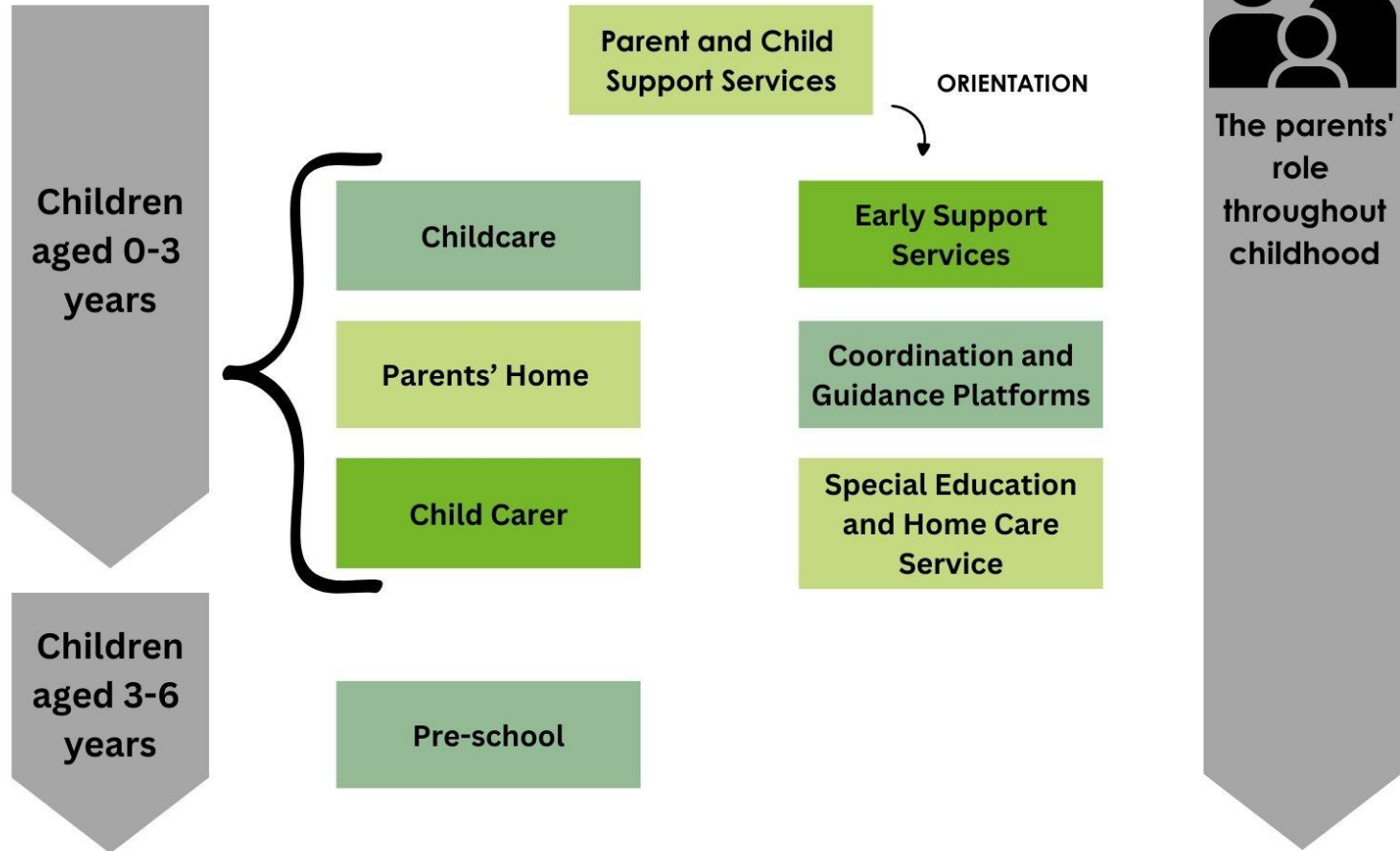
# What is Early Childhood Intervention (ECI) ?

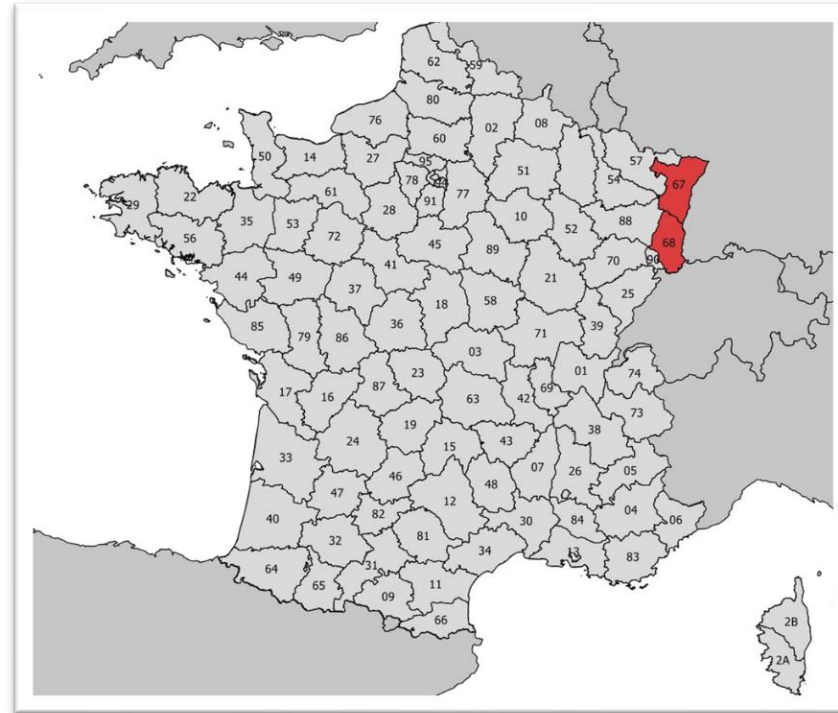
“It is only through the **inclusion and support of children from the youngest age**, in their family life and community, that they will be able to participate in society, be included at school, enter the open labour market, and enjoy the full range of their human rights. The aim of Early Childhood Intervention services is to **empower families and main caregivers** in creating an environment that **supports their children’s development and acquisition of competences** during their **first years of life**. With adequate support, parents and caregivers can provide the best, sustainable, and affordable support for their children, who can in turn thrive and develop in a familiar environment.

For **Early Childhood Intervention services** to be successful, they need to be designed with the **understanding that all learning occurs in the context of healthy relationships between infants and children and those who live with and love them**.

It is crucial to ensure children services receive **adequate funding** and support to develop family-centred processes, and that their **staff are trained** in the model of early childhood intervention.”

Source: [EASPD](#).





## Early Childhood Intervention in France:

➔ the example of Apedi Alsace





## General Information

- Support services and care for **children aged 0-6**
- Services for children with developmental disabilities, sensory, motor or psychological difficulties, or a diagnosed disability
- A total of **73 places**
- Multi-disciplinary team

## The project's aims to

- Help parents understand and **respond to their child's specific needs**,
- Offers a place where parents can be **listened to, supported and accompanied**,
- Provides **consultations**, advice, assessments and **diagnostic** tests,
- Assists parents with their **administrative, social and integration procedures**.



## General Information

- Children **under the age of 7** with **suspected neurodevelopmental disorders** (NDD)
- Explicitly target children in the **early stages of their care**
- Support services for a **period of around 1 year**



## The project's aims to

- Setting up and **coordinating a pathway,**
- **Early support,**
- **Diagnosis,**
- And to help with **administrative formalities** and **refers** the family to partners and health professionals.



## General Information

- Children from the **age of 10 weeks to 4 years**
- Provides care for a total of **30 children, 20-30% of whom with a disability**
- Support services on a **regular and emergency basis**

## The project's aims to

- Focuses on everyday life and fosters **early learning,**
- Allow children to **experiment and explore their environment,**
- **Supports families in their role as parents,** creating bonds of trust.



## General Information

- **Parents and supports professionals** being active in the Early Childhood sector,
- Services are **free of charge**
- Team of 5 Early Childhood Professionals and supported by a multi-disciplinary team

## The project's aims to

- Provide advice and **information to professionals and families** about integrating children with disabilities and Early Childhood Intervention,
- Help **families to find childcare that is suited to their needs**,
- Help **professionals** to reflect on their **practice**, develop and implement an **educational project**, and raising awareness of **pedagogical tools**.



## 2 Special Education and Home Care Services

### 1 Service

- welcomes children, adolescents, young adults aged 6 to 20 and young people with multiple disabilities aged 3 to 20.
- **51 places**
- 37 professionals

### 1 Service

- is aimed at children/adolescents/adults aged 3 to 20 years
- **40 places**

## Externalized Skills and Services Center

- A **temporary assessment and intervention** system for children, adolescents and young adults who have lost or are at **risk of losing their medical-social support**.
- Provided support for **20 people, aged 5 to 25**, with an **intellectual disability** and/or **neurodevelopmental disorders**
- Approach that aims to **meet needs of everyone** and find adequate support services

# Conclusion : A good practice to be deployed.

- ➔ **Good practices** that should be widely **deployed**.
- ➔ Promoting **Early Childhood Intervention** practices with children, as in Alsace, helps to value families. It allows families to be both **supported and considered for their expertise**.



**A good practice that should be deployed. However, problems encountered in the field need to be resolved.**

- **Greater involvement of families** in Early Childhood Intervention.
- **Broaden the scope of early intervention** and go beyond diagnosis.
- Provide Early Childhood Intervention on an **equal geographical** basis across all regions.
- Take **action against the overload** of Early Childhood Intervention organizations and combating waiting times for care.



# THANK YOU! QUESTIONS?

## Contact us!

**Unapei**

15 rue Coysevox

75876 Paris Cedex 18

France

**Tel:** 00 33 1 44 85 50 50

**Fax:** 01 44 85 50 60

[plaidoyer@unapei.org](mailto:plaidoyer@unapei.org)

**OBJECTIF : ZÉRO ENFANT PRIVÉ DE RENTRÉE**  
#JAIPASECOLE  
Votre enfant est en situation de handicap... et sans solution scolaire le soir ?  
TÉMOIGNEZ SUR MARENTREE.ORG

Unapei @Unapei\_infos  
S'engager pour le vivre-ensemble  
L'Unapei défend & fait progresser les droits des personnes en situation de handicap intellectuel. Êtes-vous #avecnous ?

**"Je suis désespérée"**  
Naomy, 11 ans, vient de terminer 3 années d'IME primaire. Elle doit entrer au collège en 6ème ordinaire sans qu'elle ne sache lire, écrire ou compter. Sa notification en IME ne peut aboutir, faute de place avant plusieurs années, et la demande d'orientation en Ula collège a été refusée.

**DOUCE FRANCE, PAYS DE LA GASTRONOMIE...**  
#PasSiDouceFrance

**DOUCE FRANCE, PAYS DE L'ÉDUCATION POUR TOUS**

**DOUCE FRANCE, TERRE D'HERITAGE...**

**DOUCE FRANCE ET TON MYTHIQUE METROPOLITAIN...**  
#PasSiDouceFrance

Unapei 40 594 abonnés  
Rentrée scolaire: Que pensent les Français du manque de ressources humaines pour la scolarisation des élèves en situation de handicap intellectuel? ... plus

**89%**  
des Français déplorent le manque de ressources humaines formées pour la scolarisation des élèves en situation de handicap intellectuel à l'école.

**"En septembre, Nour doit être accompagnée d'une AESH, mais je n'ai pas la confirmation qu'au moment de la rentrée. C'est le point noir de tous les parents: nous sommes constamment dans l'incertitude..."**

Vous et 58 autres personnes 1 commentaire · 25 republications

