



Maia Bibileishvili
Mariam Bitsadze

Child, Family, Society



Overview of the Organization

- Operating Since 1995 in Georgia


- Focus: Serving children and adults with disabilities, advocacy for their families

Founding Story

- Motivation of founding - personal story: children with cerebral palsy disorder

- Context: Georgia gaining independence and loss of social services

Organizational Growth

- From no material base to a leading force in disability policy
 - Member of different national working committees.
 - 1500 active organisation members.
 - Working across the capital and the regions.
- 

International
Regulations

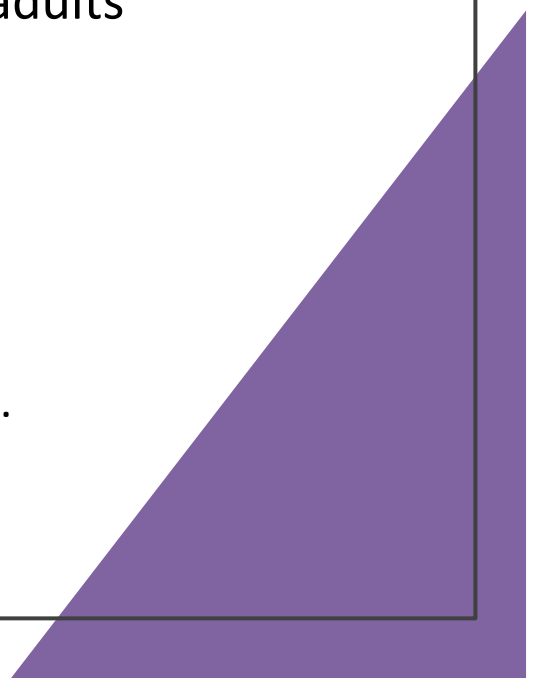
Ratification of the
Convention on the
Rights of Persons
with Disabilities.

Association
Agreement with the
European Union

Working Areas

- Increasing access to social services
- Protecting the rights of disabled children and adults
- Inclusive education and providing access
- Employment programs

Geographical scope: Tbilisi, Marneuli, Dmanisi, Gardabani.



Major Programs

1. Open center for disabled children



2. Day center for adults over 18



3. Habilitation-rehabilitation program



4. Early development program



5. Autism rehabilitation program

Current challenges

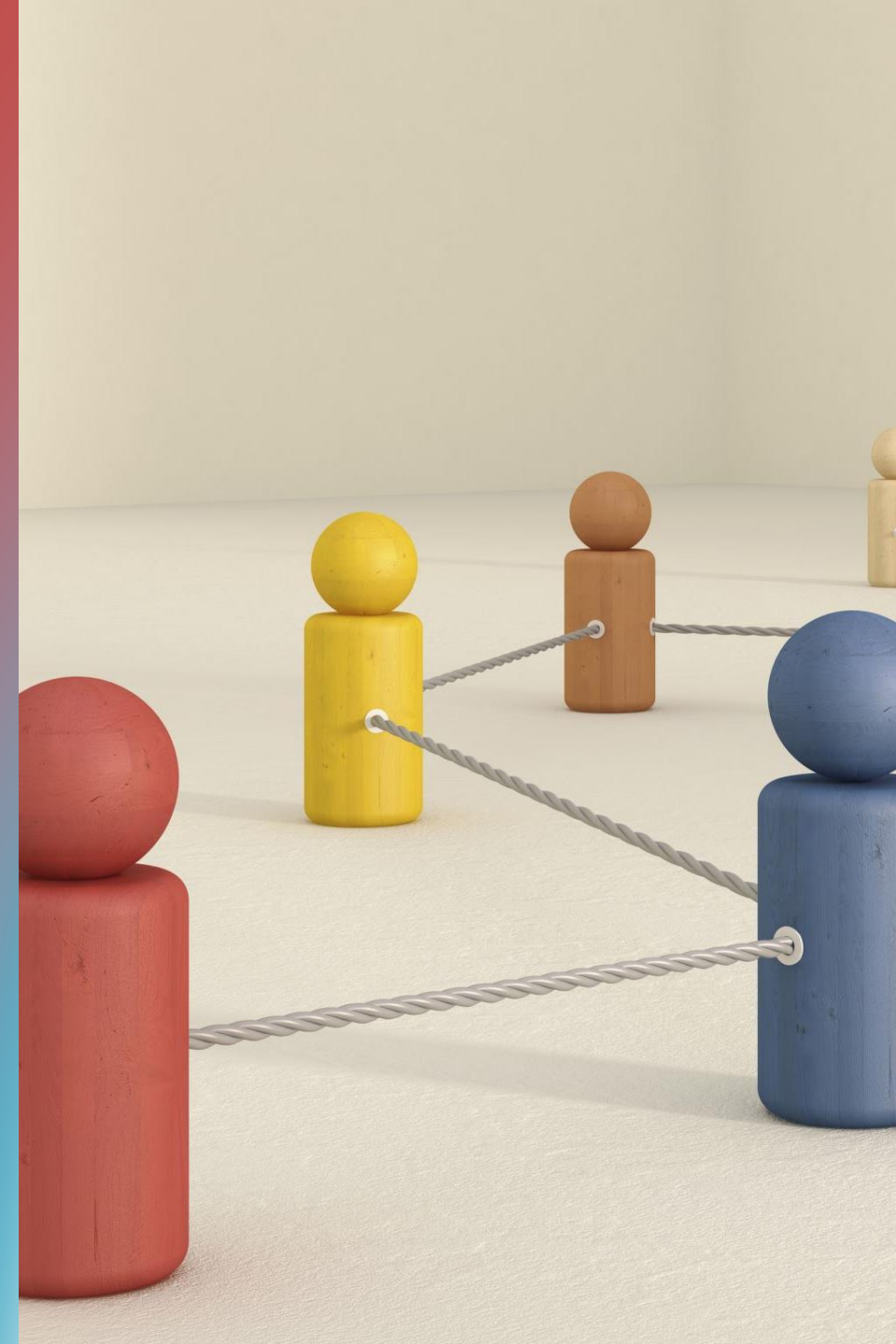
-
- **Lack of Parental Education and Support Programs.**
 - **Limited Funding for Parental Support**
 - **Absence of a Unified Parental Platform**
 - **No State Program for Adult Rehabilitation**
 - **Support Services for Adults**
 - **Deficiency in Child Psychiatry Services**
 - **Need for Regulated Professions**
 - **Lack of Respite Services**
 - **Monitoring Systems**

Partnership and Collaboration

Collaborations with Georgian government and international bodies

Major partners:

- USAID;
- European Foundation;
- Embassy of Japan;
- CENN-Caucasus Environmental NGO Network;
- International Research and Development Centre;
- Embassy of Germany in Georgia;
- PIN (PEOPLE IN NEED);
- Czech Caritas.



COFACE Membership



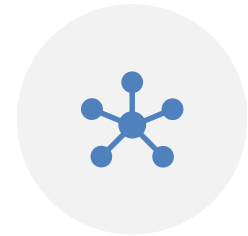
EXPERIENCE
SHARING



CAPACITY
BUILDING



PARTNERSHIP
DEVELOPMENT



NETWORKING
OPPORTUNITIES

Thank you for your
attention!



Child, Family, Society



dcfs.Georgia@gmail.com