

**European peer Exchange:  
The House of the Child in Belgium**

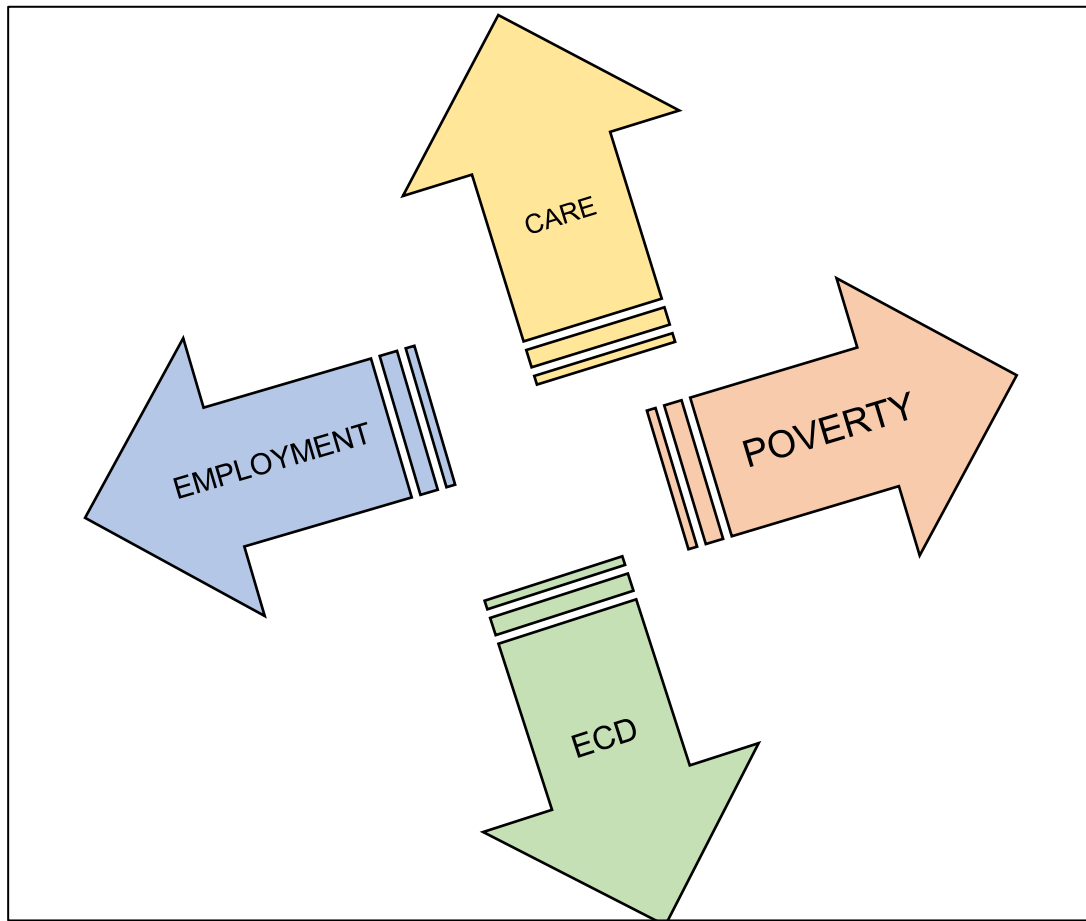
*Integrated family support models in Europe*

Martino Serapioni  
COFACE Families Europe

*Bruxelles, 19 November 2025*

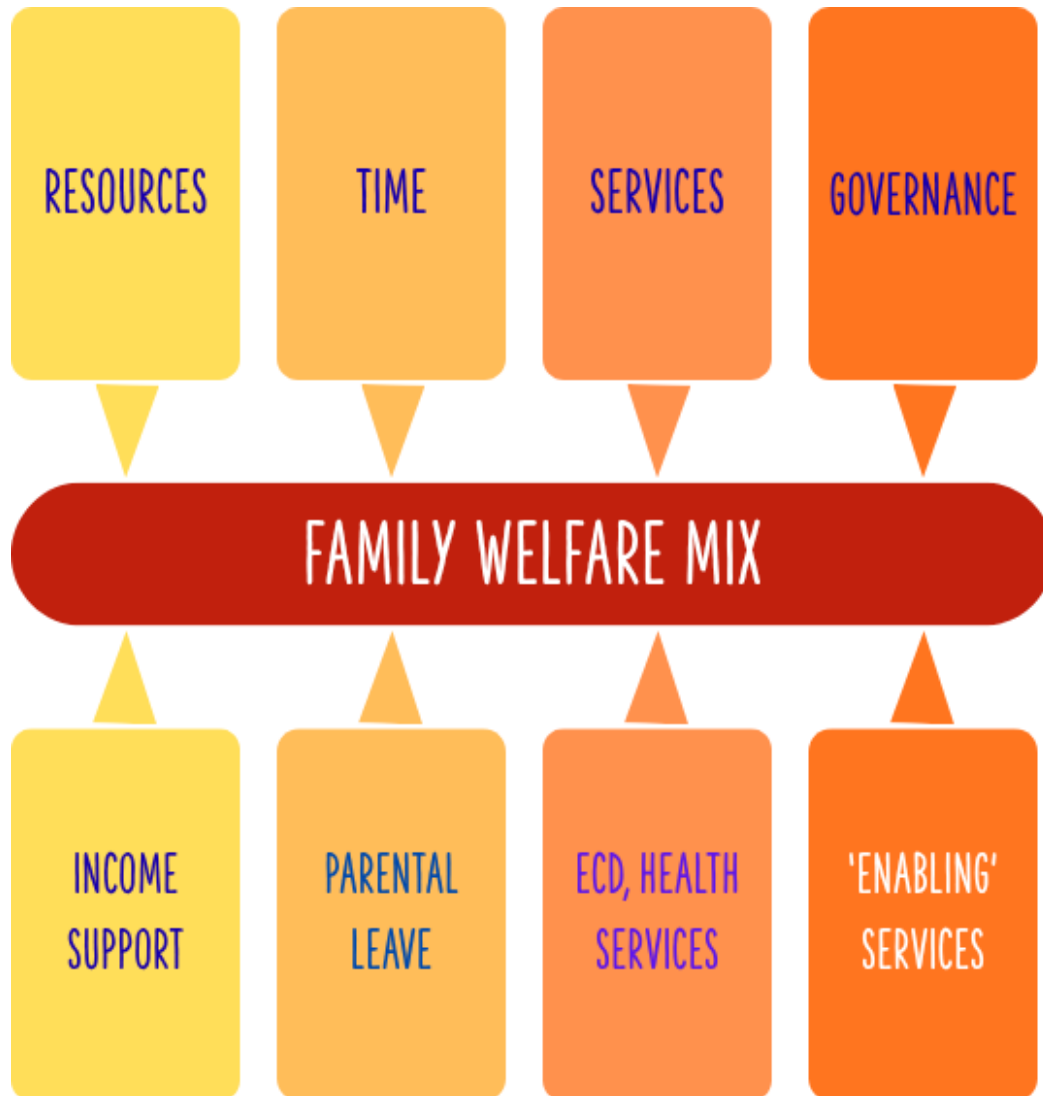


# SUPPORTING THE FAMILY AS PART OF BROADER POLITICAL OBJECTIVES



- Tackling poverty
- Employment participation
- Support system for dependent citizens
- Human capital development

# FAMILY WELFARE MIX



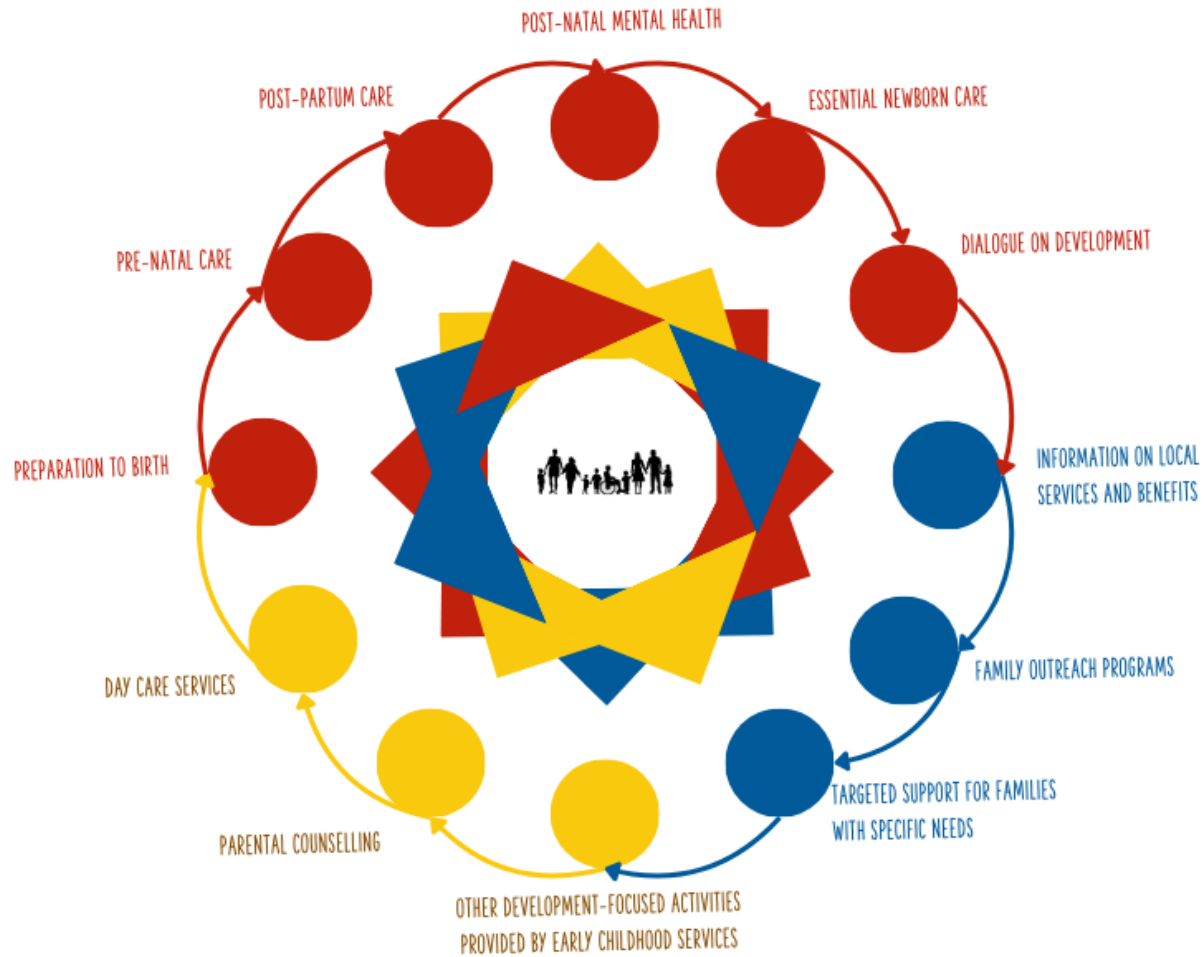
## Four dimensions of “policy action”

- **Adequate economic resources:** for a decent standard of living.
- **Time:** through leave policies and flexible work.
- **Services:** universal access to quality childcare, healthcare, housing, etc.
- **Integrated governance:** actively coordinate resources and services while mitigating barriers to access.

## Four pillars of family support

- **Income support.**
- **Parental leave.**
- **Educational and health services.**
- **Guidance and empowerment:** services that enable families to acquire information, skills, and navigate local resources.

# FAMILY CENTERS



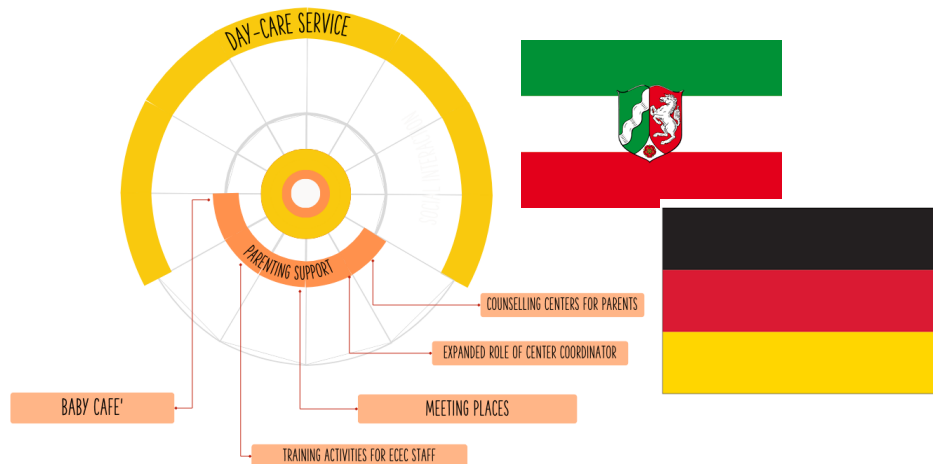
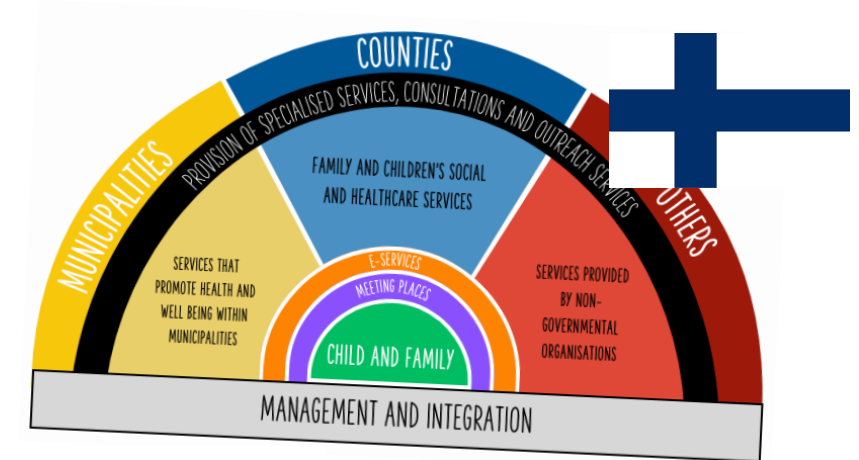
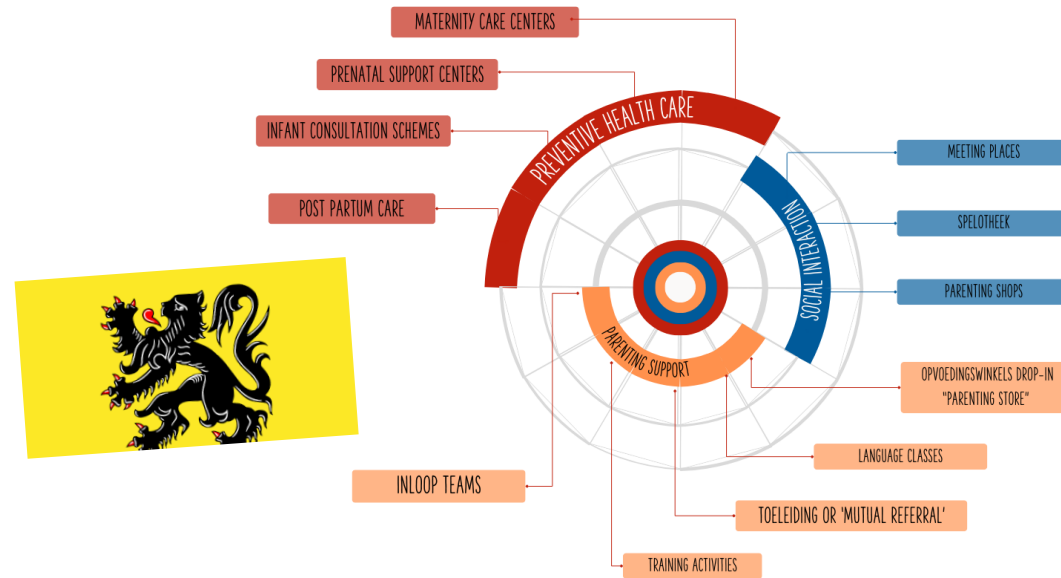
## Family Centres / Hubs

- Identified as a distinct service to **combat fragmentation** in family support systems.
- Core function: **facilitating access to local services** and **empowering parents**.

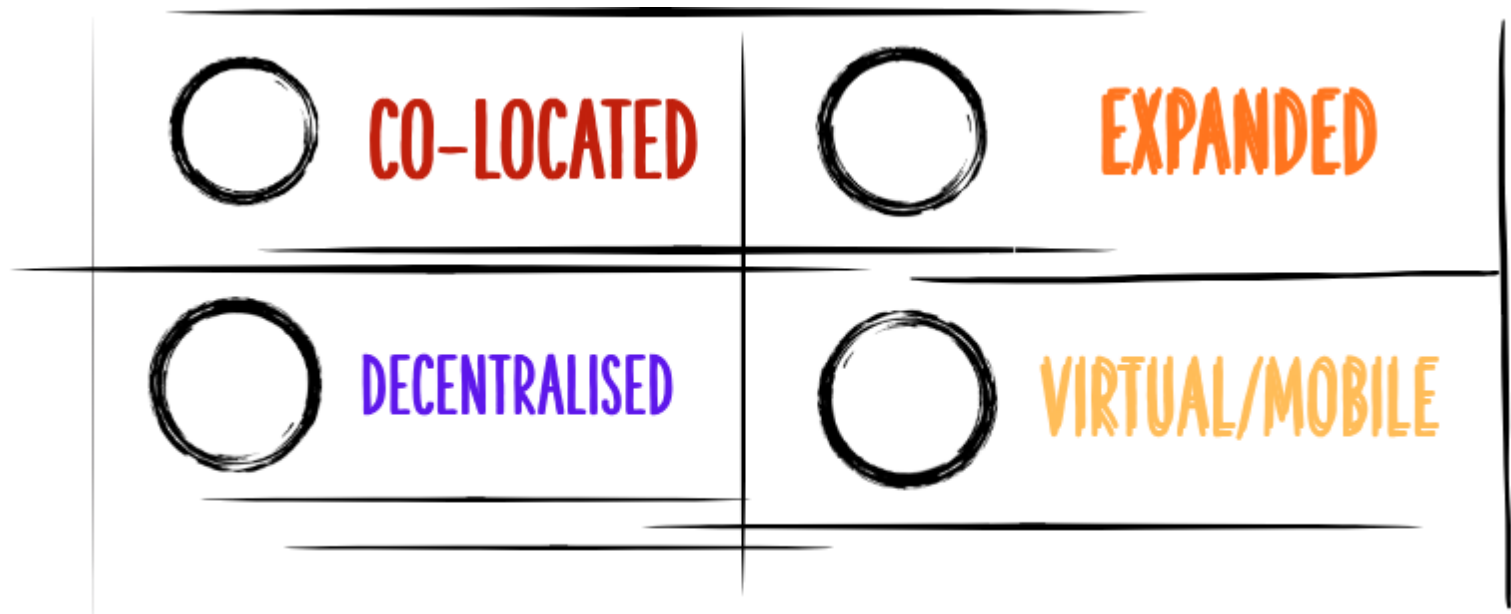
## The dual nature of Family Centres

- As an **innovative service**: they fill the gap in guidance and information for families.
- As an **administrative tool**: they respond to the need to **recompose and defragment** a system of scattered services.

# MANY EUROPEAN “NATIONAL MODELS” → BUT LOCAL IMPLEMENTATION REMAINS KEY



## FOUR ORGANISATIONAL CONFIGURATIONS



- **Integrated, 'co-located' model**

"Everything-under-one-roof" (Finland's *Perhekeskus*).

- **Integrated, 'expanded welfare' model**

Embeds support within existing universal services (NRW's *Familienzentren*).

- **Decentralized network model**

Coordinated networks of local service points for territorial proximity.

- **Virtual or mobile model**

Integration through digital platforms and mobile teams, without physical consolidation.

## Link to the EU Child Guarantee

Family centres are the embodiment of the Child Guarantee's vision:

- A framework to strengthen existing systems.
  - Generating innovative, holistic, and trans-sectoral solutions.
- 

### Key Advice 1 - **Data and planning**

Current NAPs are often **incomplete, with vague objectives.**

**A stronger monitoring framework is needed** using disaggregated data to track:

- Who uses services
  - Where gaps persist
  - Which groups are left behind
- 

### Key Advice 2 - **Capacity building**

Local authorities often lack funds and expertise.

Solution: Peer-to-peer learning between municipalities to share best practices and close the gap between national goals and local realities.

Thank you for the attention.

