

High-Level Conference
“No Child is Left Behind: Promoting Child Well-Being
and Combating Child Poverty

*Investing in the early years: Ensuring
inclusive child services for children in need*

Martino Serapioni
COFACE Families Europe

Lefkosia (Nicosia), May 21, 2026



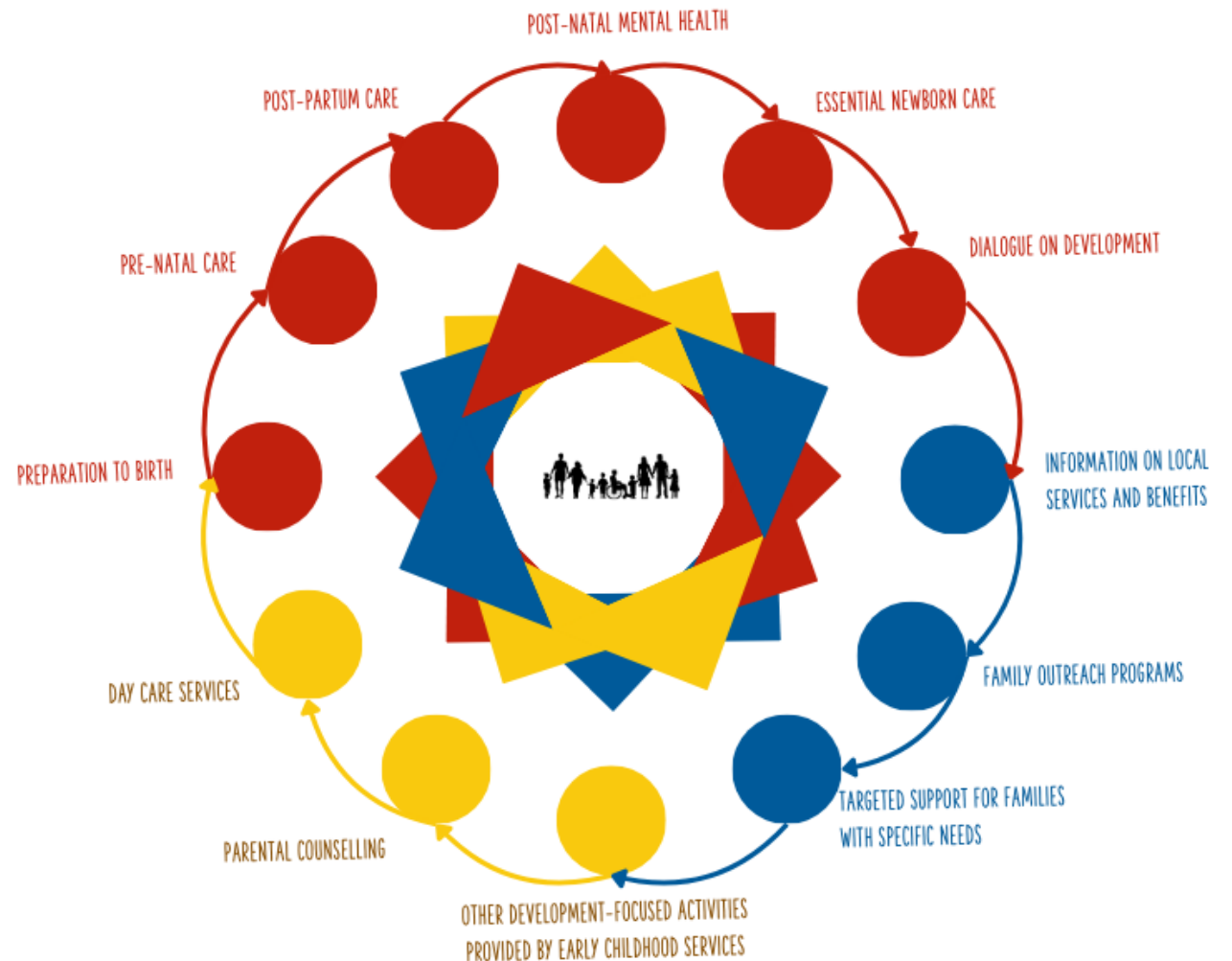
BUILDING THE CASE: THE SUPPORTIVE ECOSYSTEM

Beyond Infrastructure Foundations

While material resources, public facilities, and employment framework structures form the crucial baseline of state intervention, they do not complete the causal picture of child well-being.

Early life trajectories are strongly determined by proximal environmental processes: regular routines, the availability of interactive materials, and the quality of domestic socio-emotional interactions.

To effectively close systemic inequality gaps early, public policy must actively address, validate, and reinforce parental competencies and domestic micro-ecosystems.



THE STRATEGIC PILLAR FRAMEWORK: RSTG

Resources (R)

Establishing reliable, adequate economic security and family transfers, regularly indexed to cost of living standards, to neutralize systemic poverty traps.

Services (S)

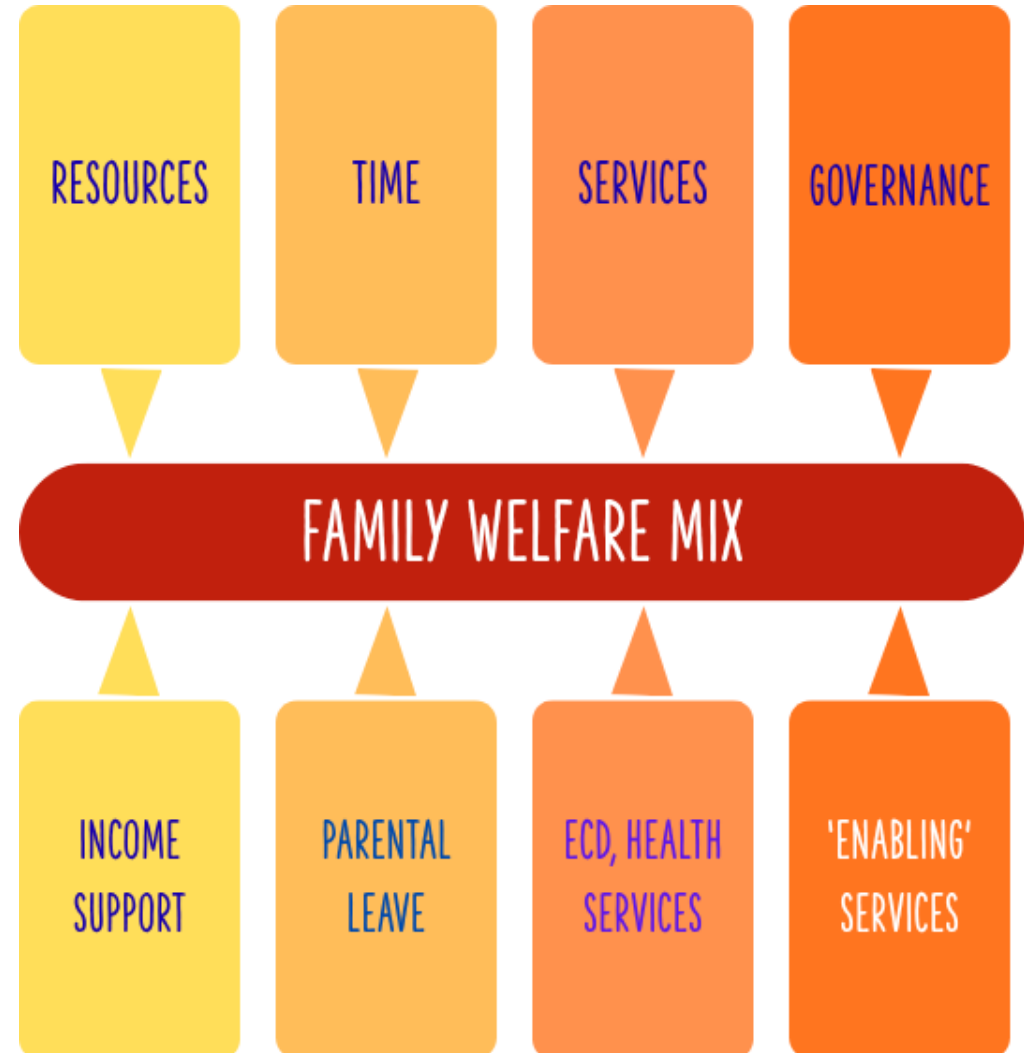
Enforcing universal accessibility to high-quality, non-segregated ECEC, healthcare, and shelter systems operating as inclusive communal hubs.

Time Sovereignty (T)

Reforming structural leave schemas and working arrangements to ensure parents have the cognitive space and time required for direct, high-value developmental interaction.

Integrated Governance (G)

Breaking bureaucratic silos through cross-sectoral tracking, monitoring, and structural cooperation to ensure R, S, and T perform as a unified strategy.

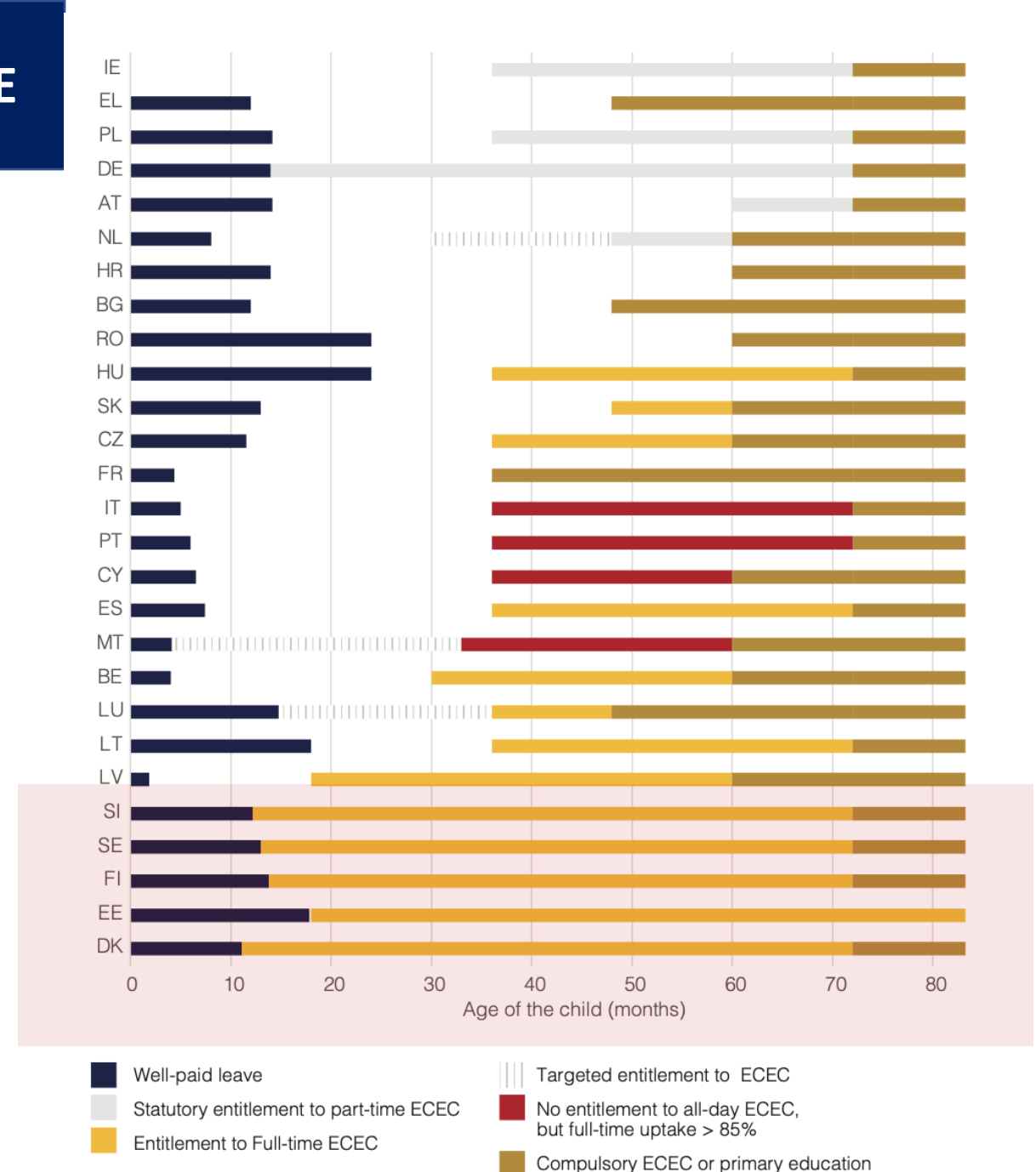


THE "CHILDCARE GAP" STRUCTURAL FAULTLINE

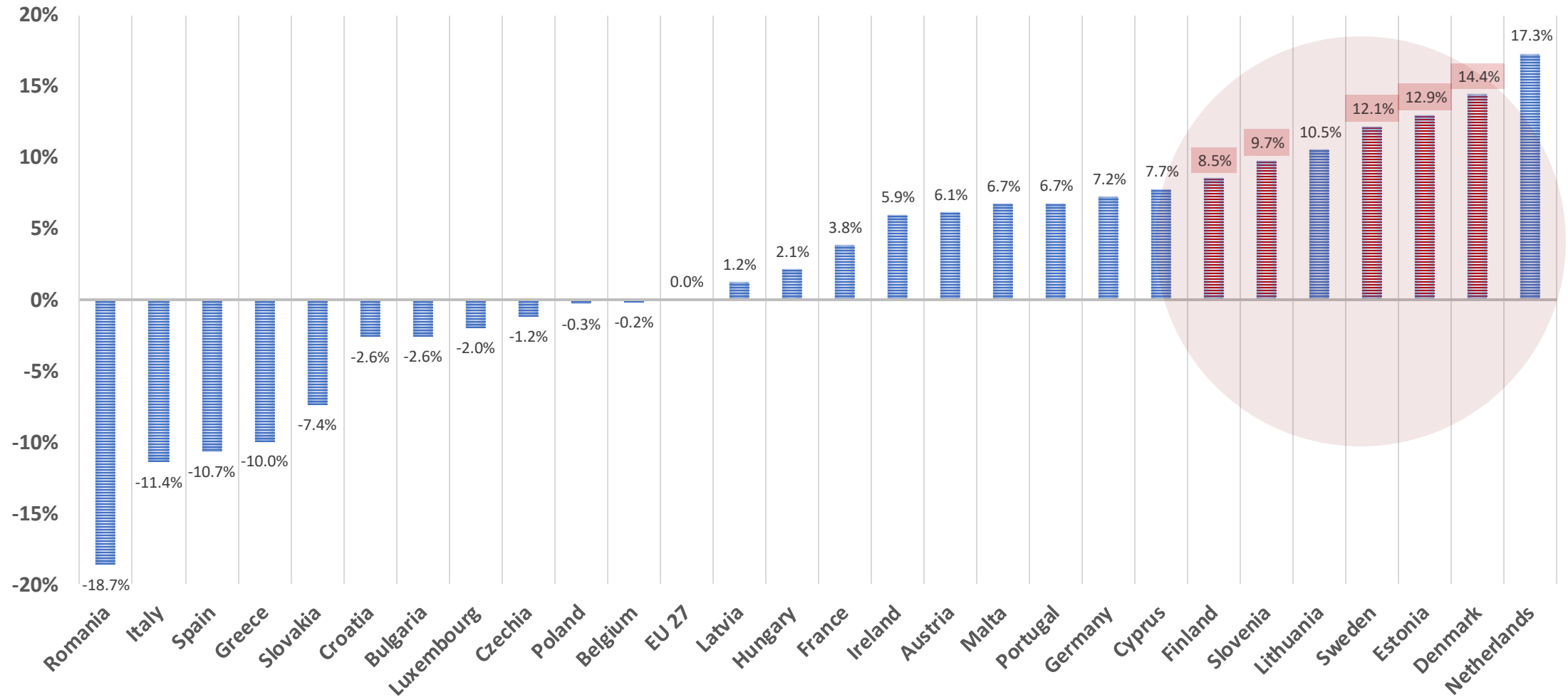
A Institutional Misalignment

The childcare gap identifies the hazardous institutional void occurring when the expiration of well-compensated family care leave does not align chronologically with the statutory start of guaranteed public ECEC access.

- **Systemic Fragmentation:** Caused by distinct legislative paradigms operating in complete programmatic isolation.
- **Compounded Risks:** Unfairly externalizes social care burdens onto private market selection or triggers forced female labor market detachment.

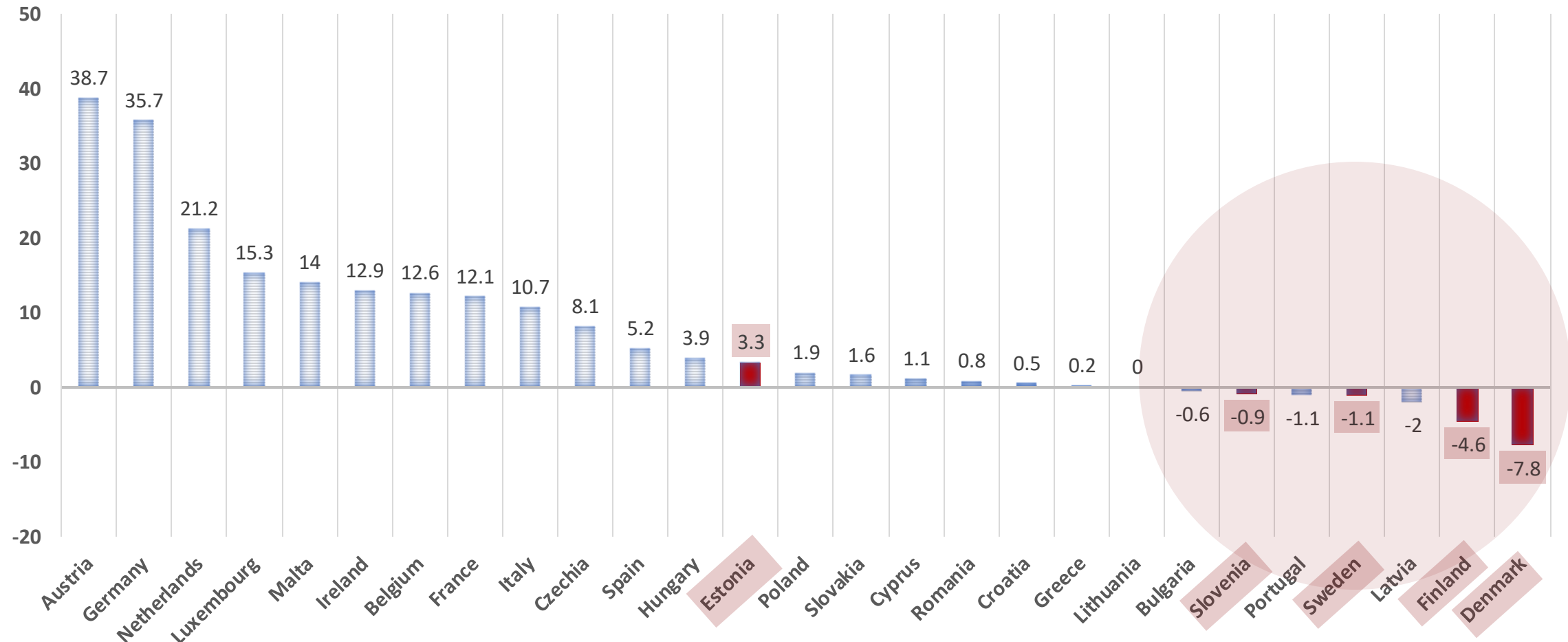


FULL-EMPLOYMENT HOUSEHOLDS WITH CHILDREN, DEVIATION FROM EU AVERAGE (2025)



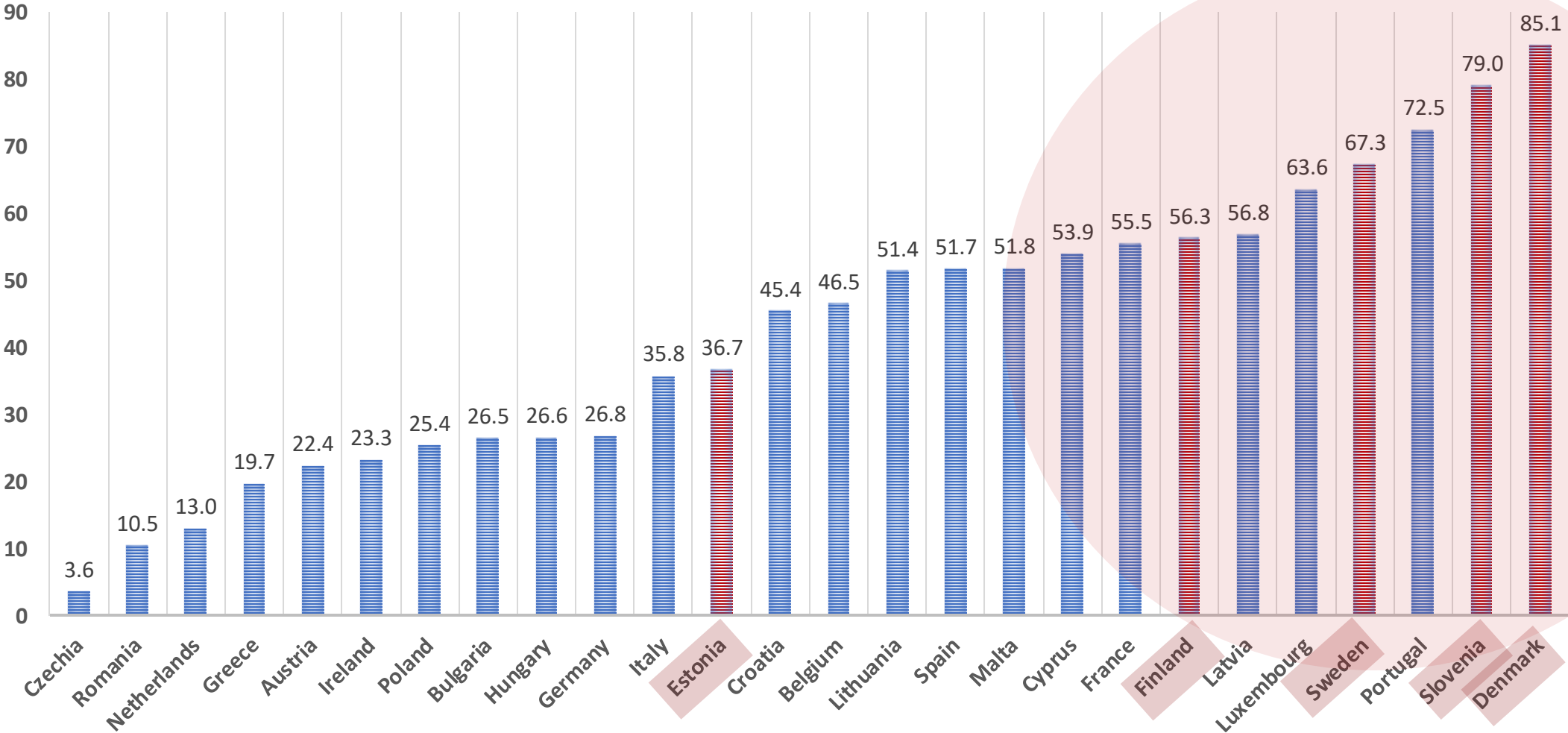
Source: EU SILC, Ifst_hhptety database

PART-TIME EMPLOYMENT RATE DIFFERENTIALS AMONG WOMEN, BY PRESENCE OF CHILDREN (2025)



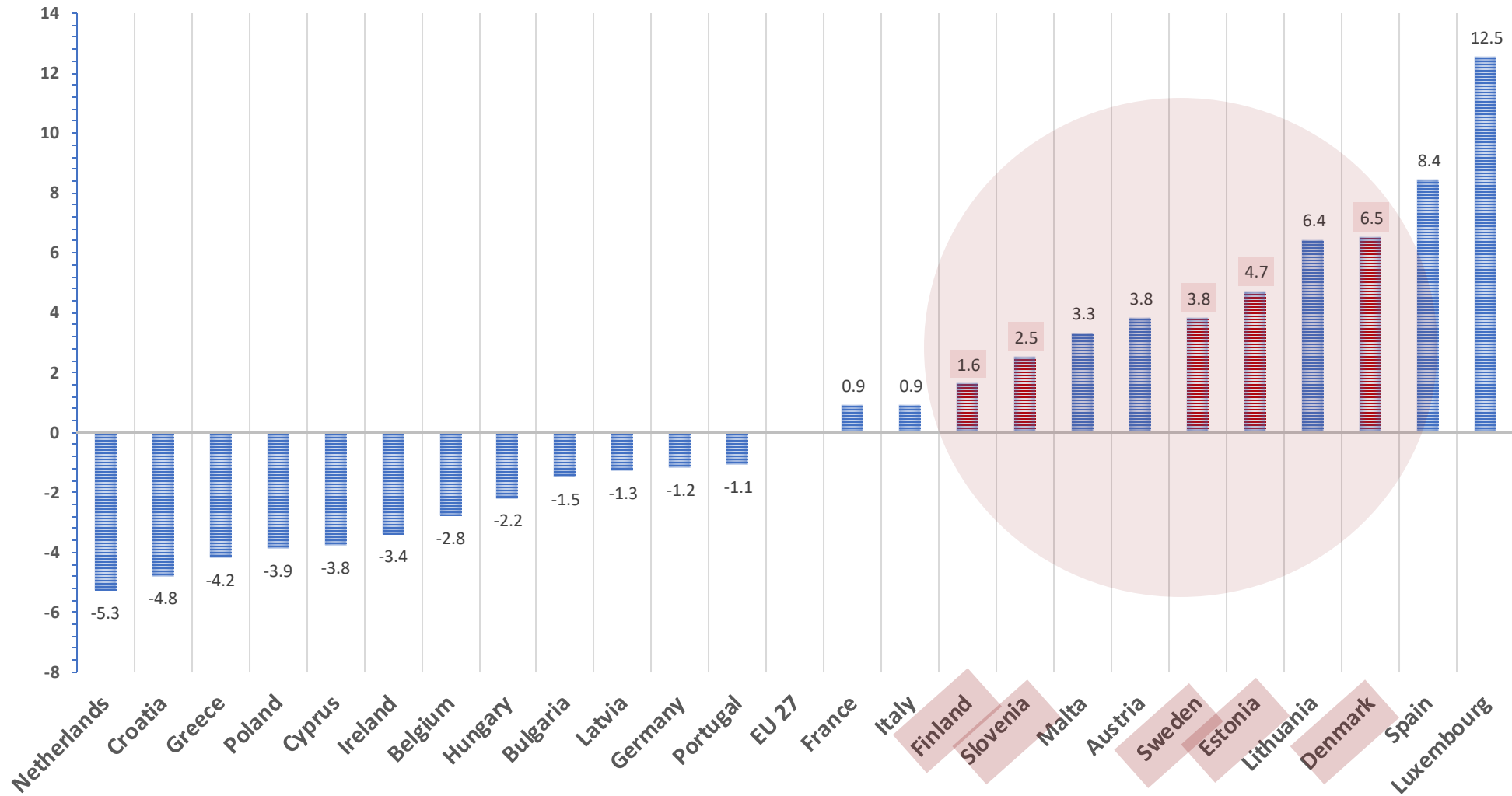
Source: EU SILC, *lfst_hhptety* database

FULL TIME (> 25H/WEEK) ECEC ATTENDANCE (AGES 1-2), (2025)



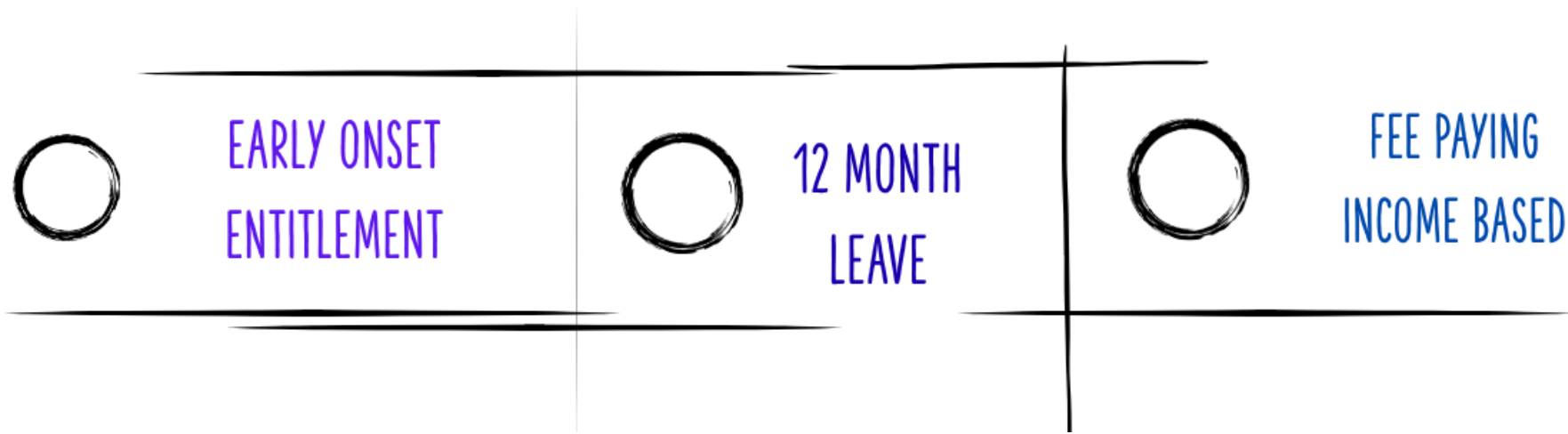
Source: EU SILC, ilc_caindform25 database

AROEPE CHILDREN (AGES 1-2) IN FULL-TIME ECEC: DEVIATION FROM EU AVERAGE (2025)

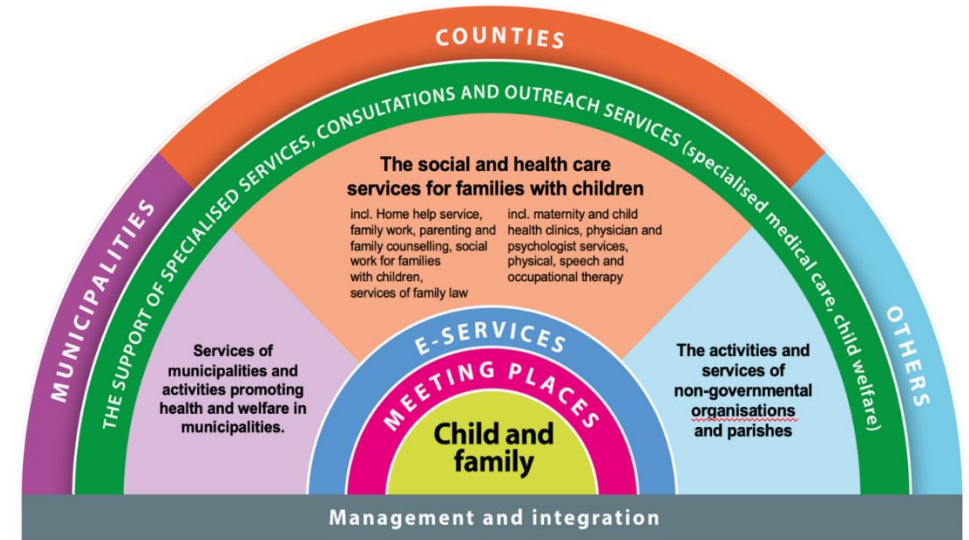
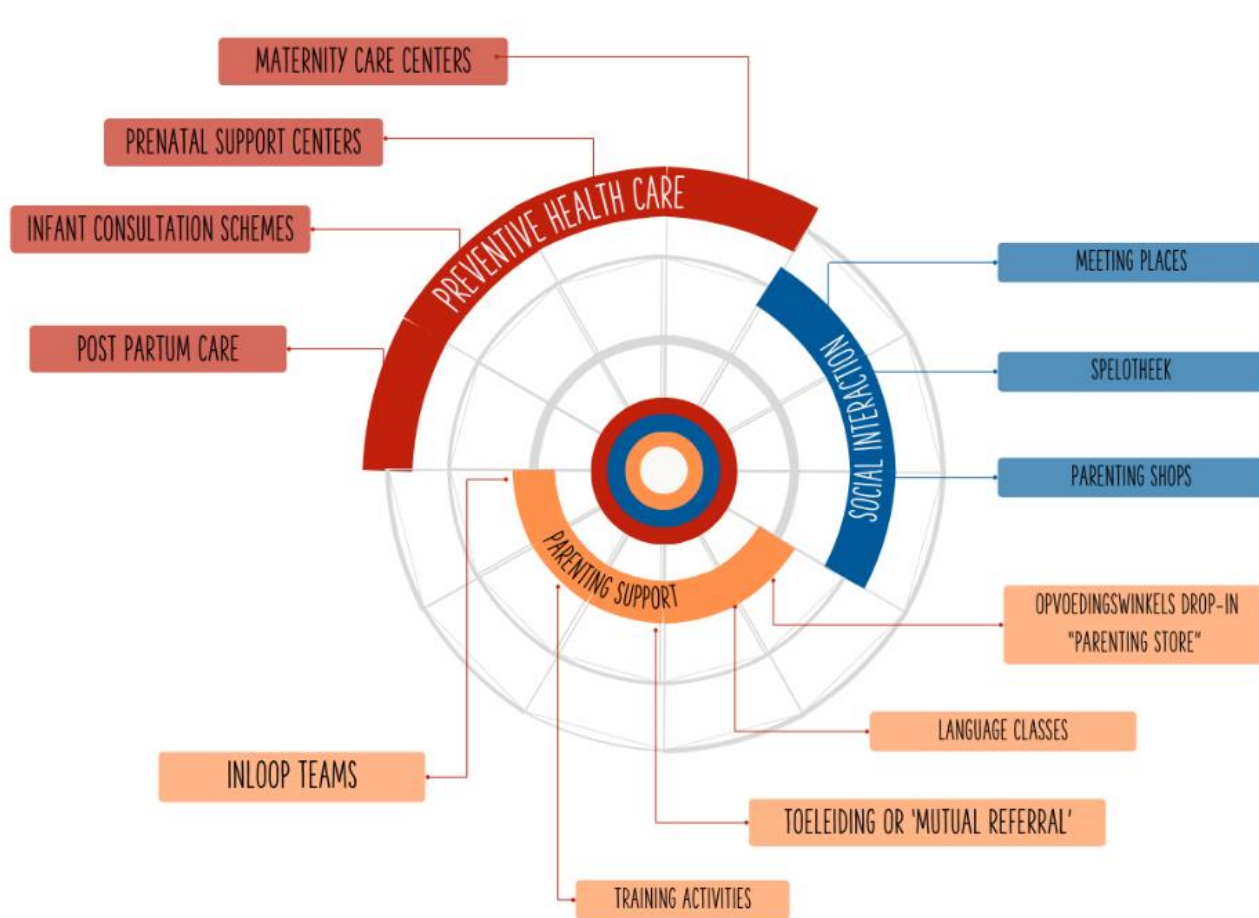


Source: EU SILC, ilc_caindform25 database

STRUCTURAL FEATURES DRIVERS



MULTI-AGENCY HUBS



Finland (Perhekeskus): Multidisciplinary cooperation for early identification.

Sweden (Familjecentraler): Co-located health, social, and education services.

Estonia (Perepesa): The "Family Nest" - a top-down systematic prevention tool for 0-7 years.

SYSTEM DEMANDS AND CONCLUSIONS



ECD : SOCIAL
CHALLENGE



SERVICE ECOSYSTEM ESSENTIAL
PUBLIC INFRASTRUCTURE



UPTURNING SEPARATION
BETWEEN ECD AND WLB



CHILD GUARANTEE: STRATEGIC
LEVER FOR INNOVATION

Thank you for the attention.

